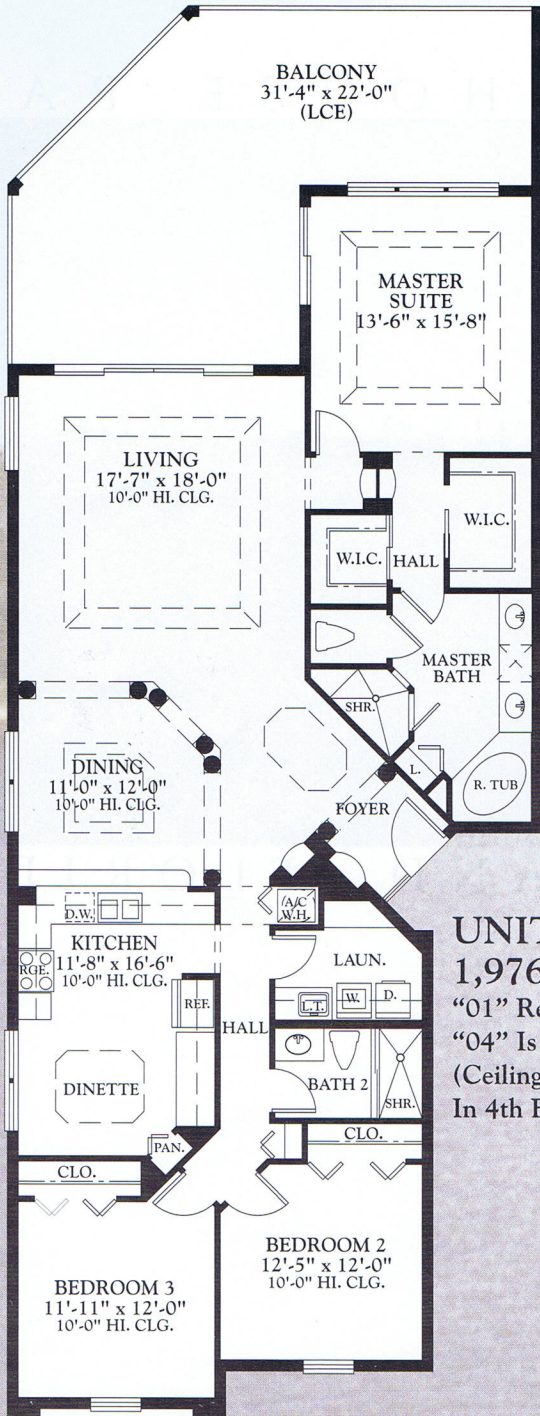
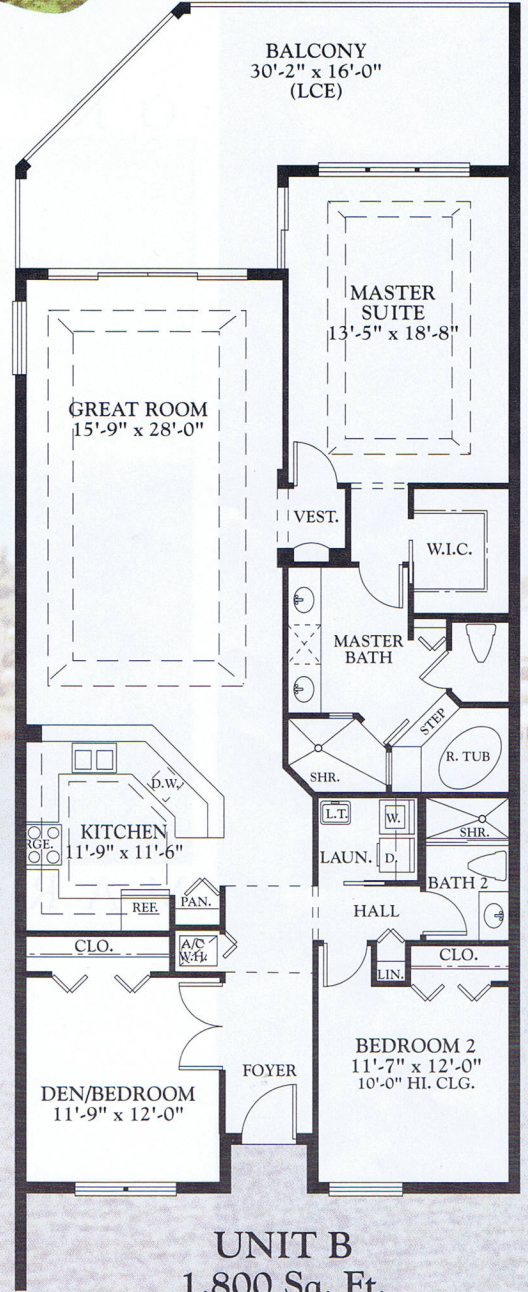


TOWER RESIDENCES

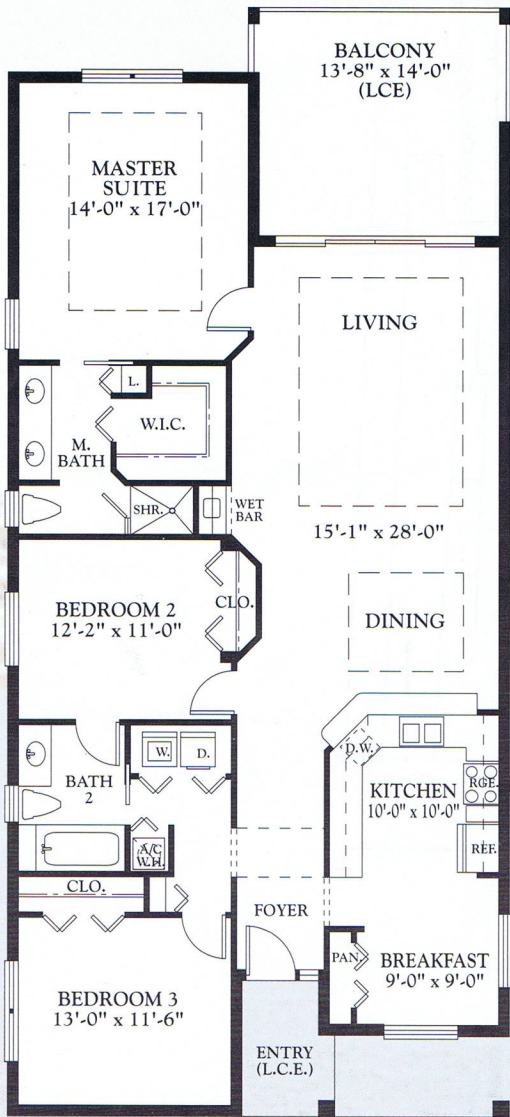


UNIT A
1,976 Sq. Ft.
"01" Residence
"04" Is Reversed
(Ceiling Trays Only Available
In 4th Floor Residences)



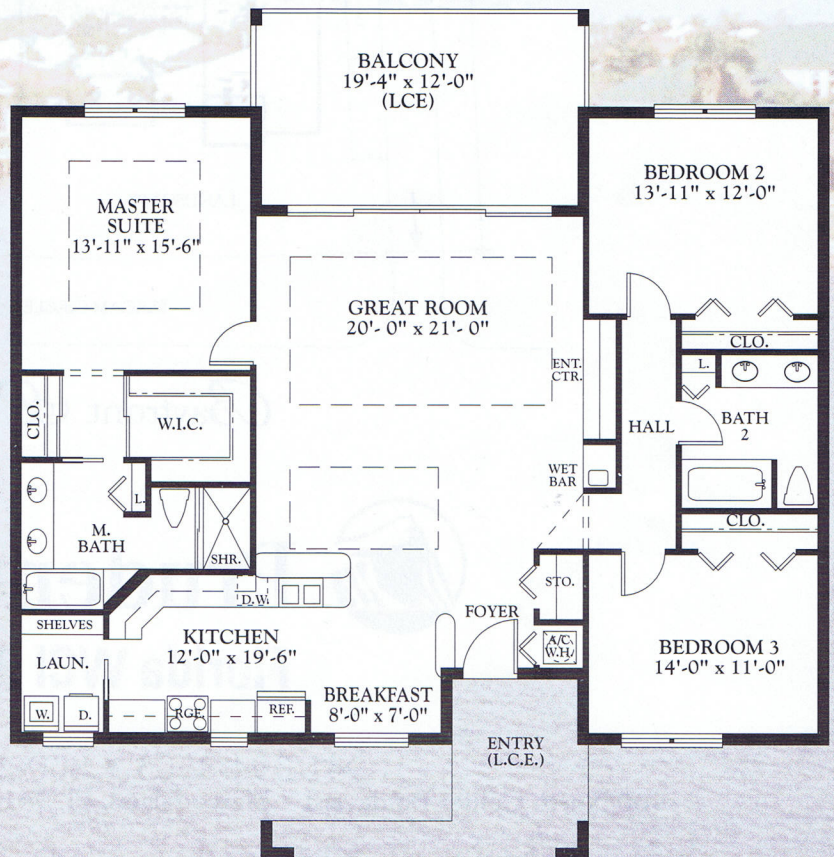
UNIT B
1,800 Sq. Ft.
"02" Residence
"03" Is Reversed
(Ceiling Trays Only Available
In 4th Floor Residences)

VILLA RESIDENCES



UNIT C
 1,660 Sq. Ft.
 "01" Residence
 "03" Is Reversed
 (Ceiling Trays Only Available
 In 2nd Floor Residences)

UNIT D
 1,680 Sq. Ft.
 "02" Residence
 (Ceiling Trays Only Available
 In 2nd Floor Residences)



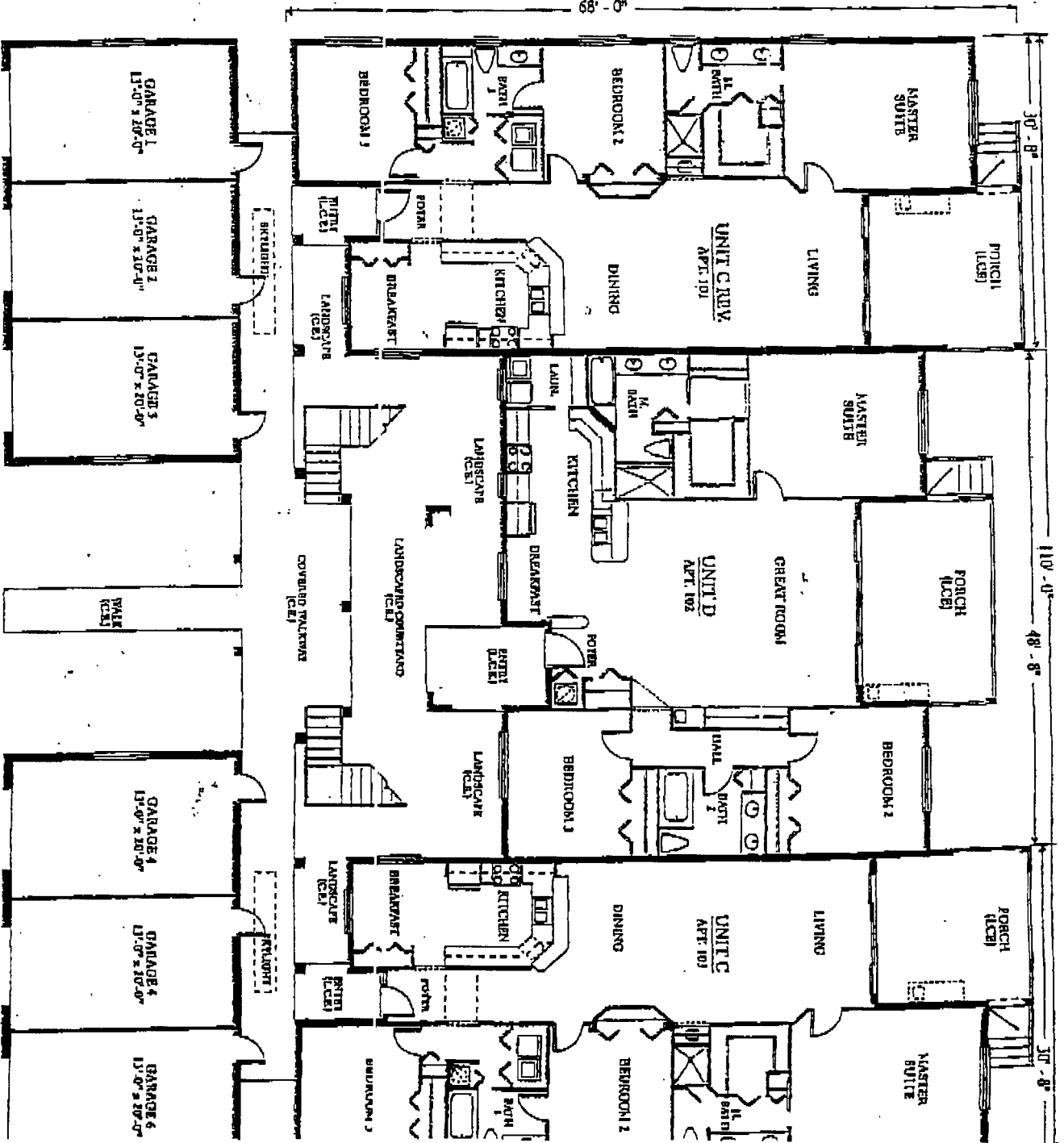
Bayfront & Place

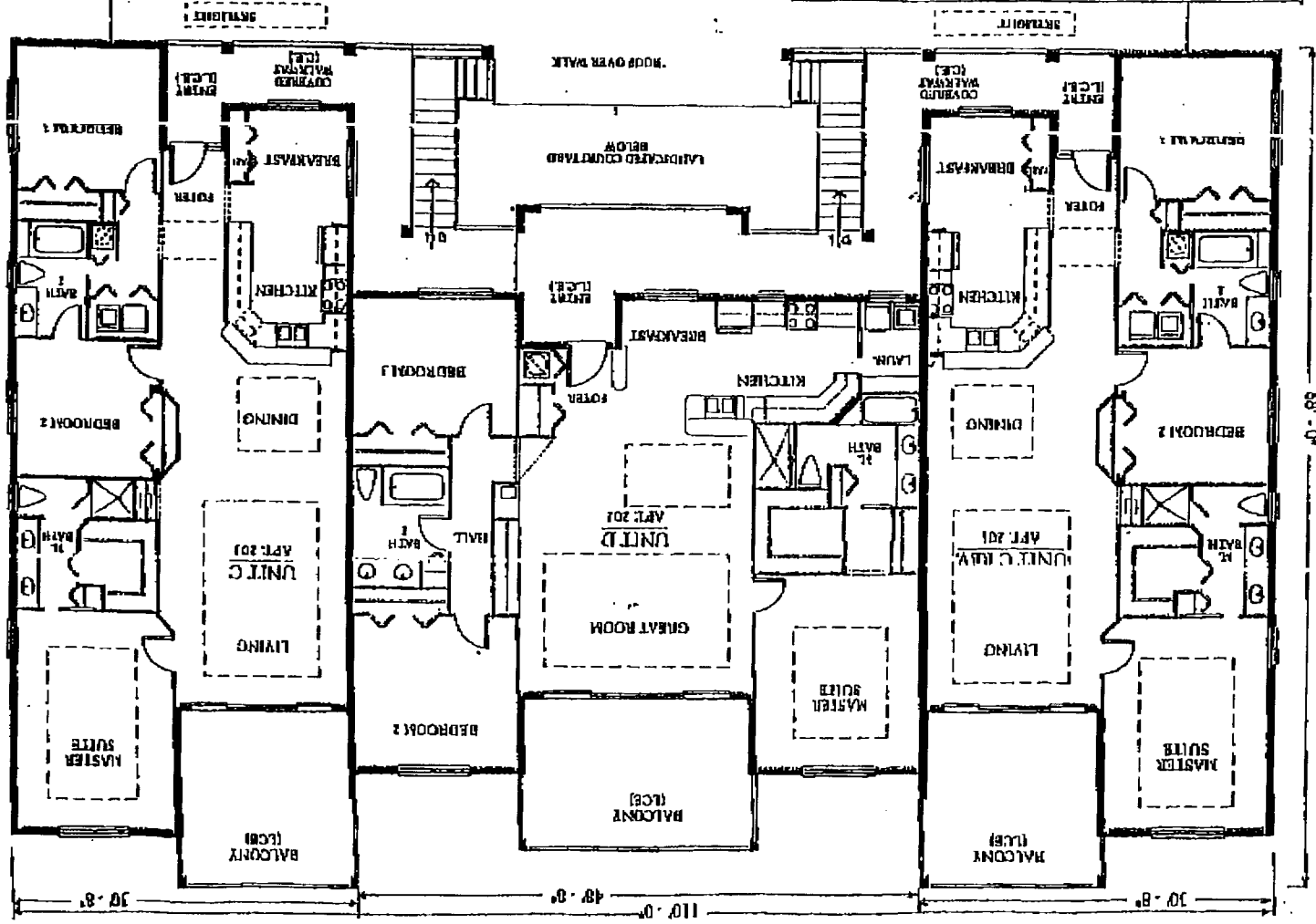
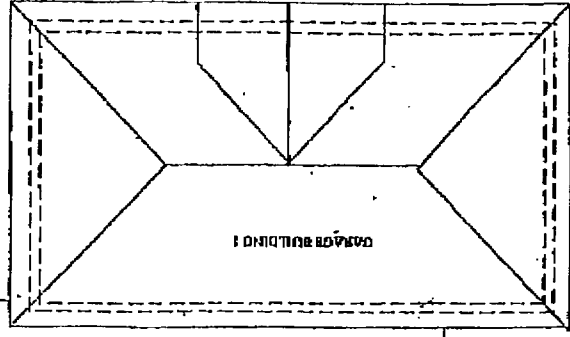
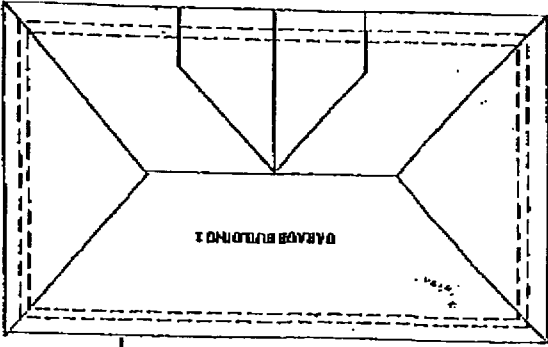
ALL IMPROVEMENTS ARE PROPOSED
 AN 18 UNIT CONDOMINIUM
 MARCO ISLAND - COLLIER COUNTY - FLORIDA

TYPICAL FLOOR PLAN 1ST FLOOR

SCALE: 1/8" = 1'-0"

PREPARED BY:
 DEKONSCHEIN & ASSOCIATES, INC.
 Architectural Planner
 NAPLES (941) 274-6313





ALL IMPROVEMENTS ARE PROPOSED

Raymont & Lacey

AN 1 1/2 UNIT CONDOMINIUM

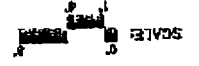
MARCO ISLAND - COLLIER COUNTY - FLORIDA

PREPARED BY:

DEKONSCHIN & ASSOCIATES, INC.

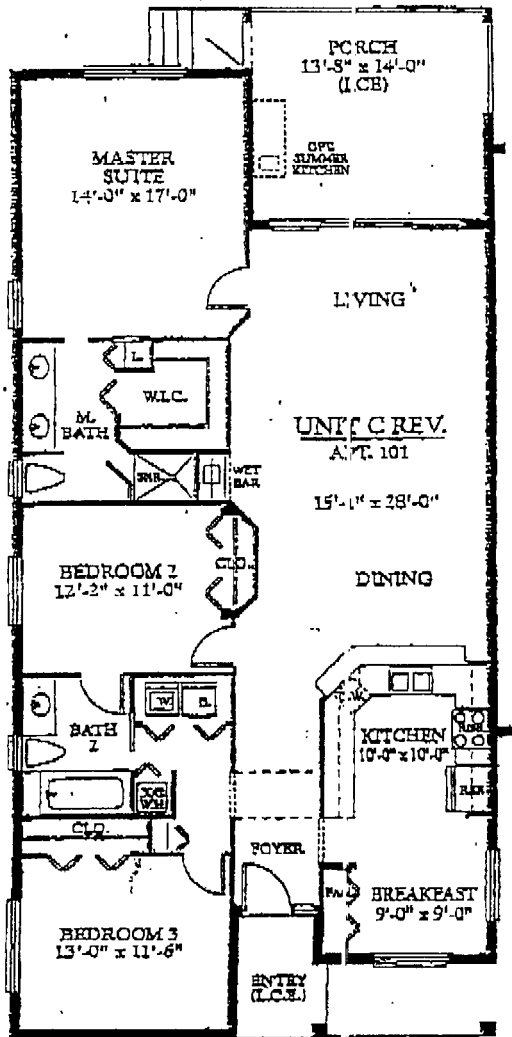
Architect/Planner

MAPLE 1040 774-8373



TYPICAL FLOOR PLAN

2ND FLOOR

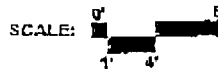


ALL IMPROVEMENTS ARE PROPOSED

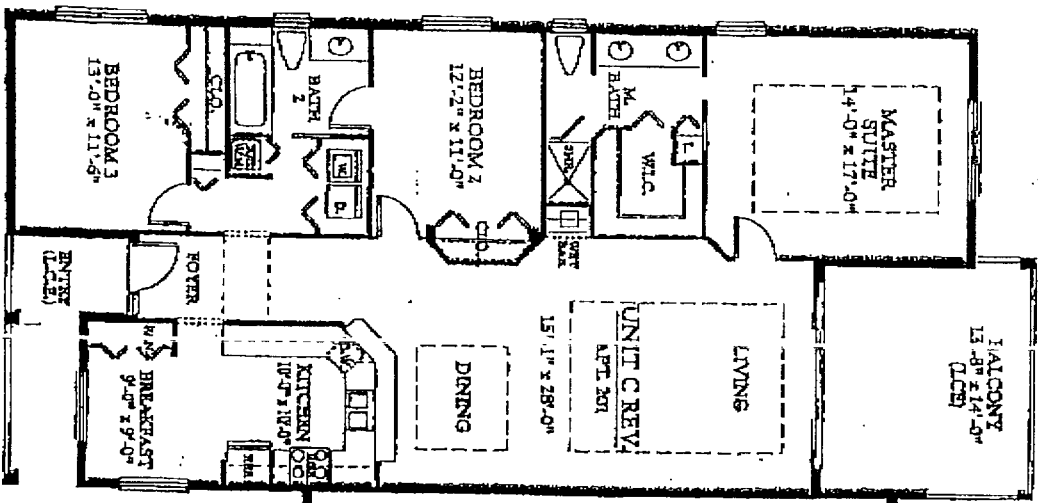
Bayfront Place

AN 18 UNIT CONDOMINIUM
MARCO ISLAND • COLLIER COUNTY • FLORIDA

UNIT C REV. FLOOR PLAN 1ST FLOOR



PREPARED BY:
DEKONSCHIN & ASSOCIATES, INC.
architect/planner
NAPLES (841) 774-2313



ALL IMPROVEMENTS ARE PROPOSED

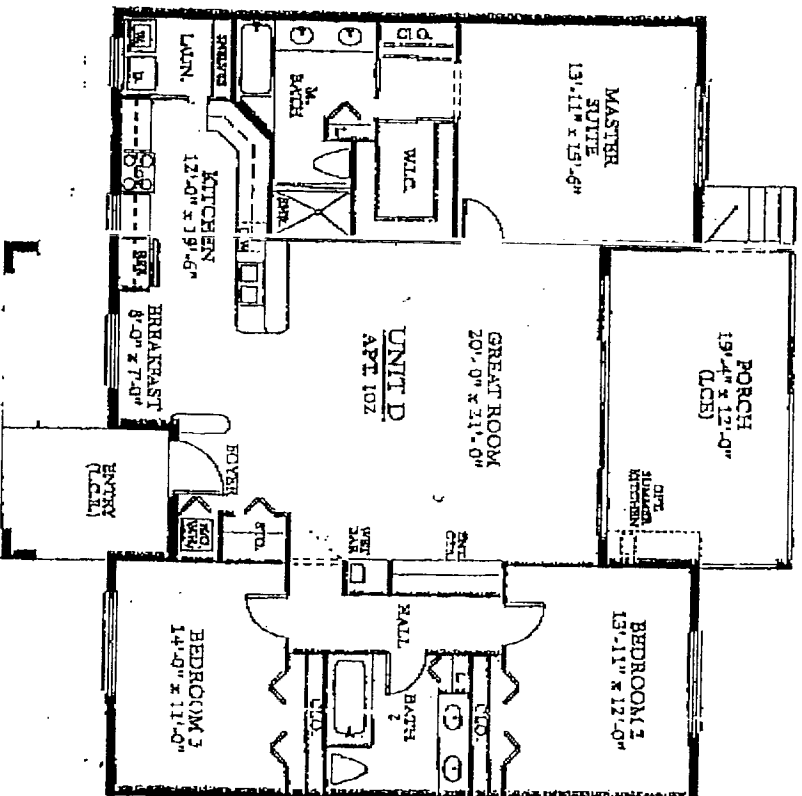
Bayfront @lace

AN 18 UNIT CONDOMINIUM
 MARCO ISLAND • COLLIER COUNTY • FLORIDA

UNIT C REV. FLOOR PLAN
2ND FLOOR



PREPARED BY:
 DEKONOSCHIN & ASSOCIATES, INC.
 a r c h i t e c t / p l a n n e r
 No. Plus (941) 774-8312



ALL IMPROVEMENTS ARE PROPOSED

Bayfront & *Lace*

AN 18 UNIT CONDOMINIUM,
MARCO ISLAND - COLLIER COUNTY - FLORIDA

UNIT D FLOOR PLAN
1ST FLOOR



PREPARED BY:
DEKONOSCHIN & ASSOCIATES, INC.
1700 HILLCREST PLAZA N E T
NAPLES (841) 774-4333