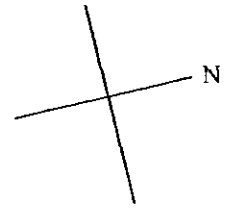
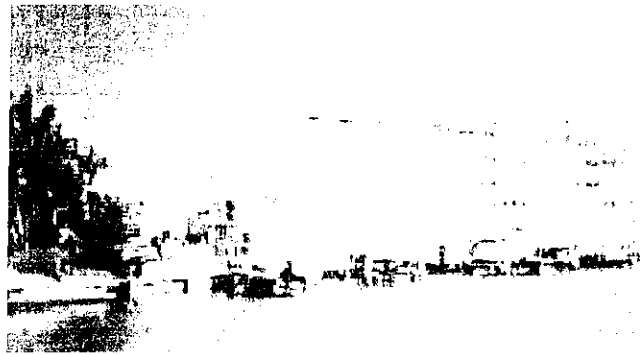


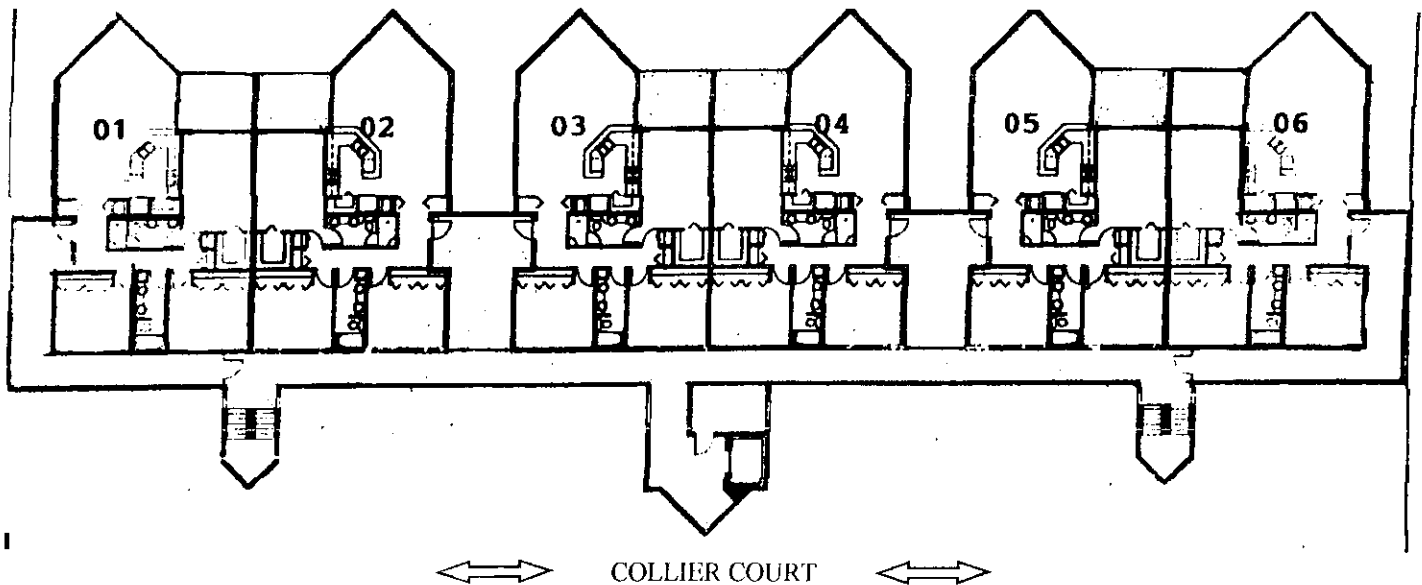
# BOAT CLUB

870 Collier Court



Boat Docks

Pool



<u>Year Built:</u>	1995	<u>Unit No.</u>	<u>Sq. Ft.</u>	<u>Bed/Bath</u>
<u>No. Stories:</u>	4	01--06	1442	3 / 2
<u>No. Units:</u>	22	Penthouses	1940	3 / 2
<u>Rental Restrictions:</u> 30-day min 2/year				
<u>Pets:</u> Cat or dog under 15#				

## AMENITIES:

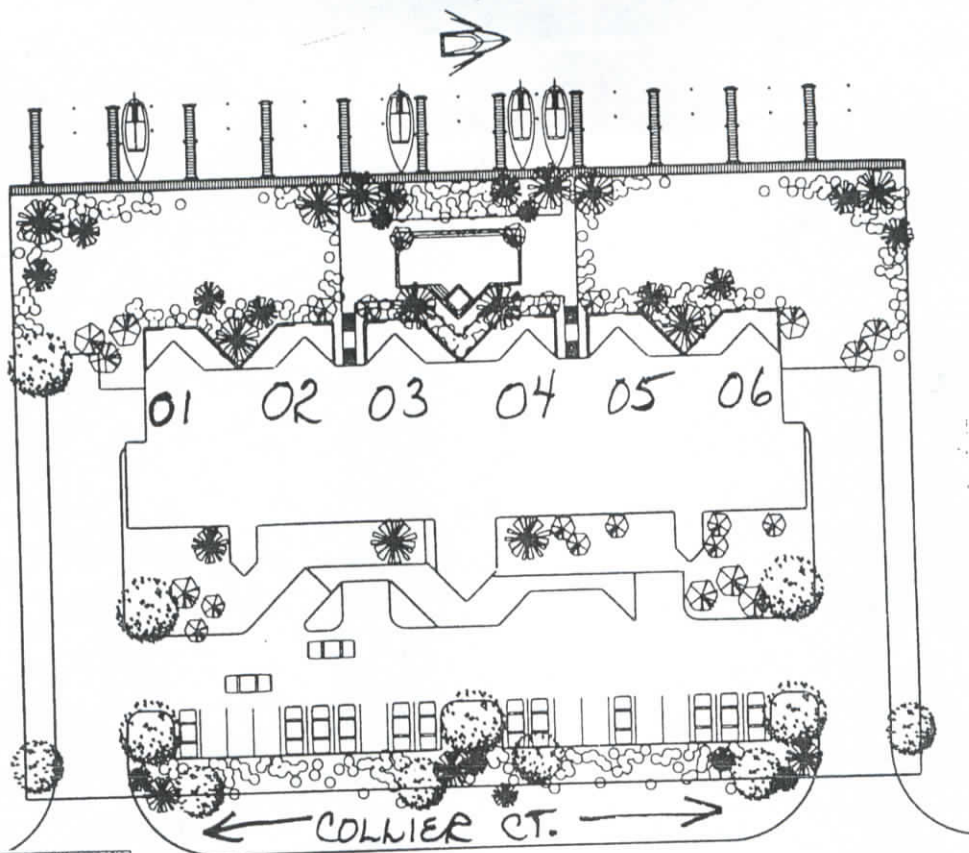
Heated pool  
Washer/dryer in unit  
Boat dock for each residence (25-ft)

Domed ceiling in kitchen  
Penthouses have cathedral ceilings  
Covered parking (penthouses have 2 spaces)

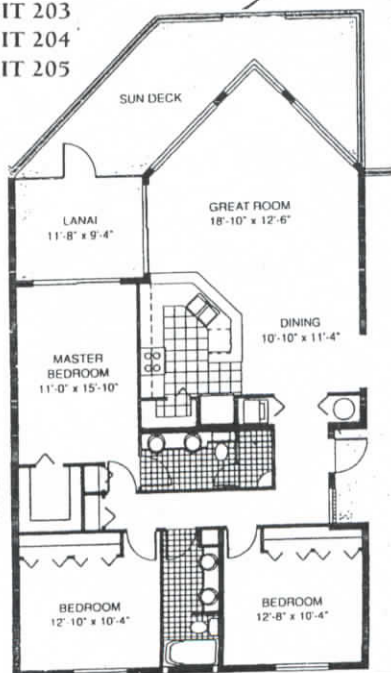
Screened-in lanai

Elevator

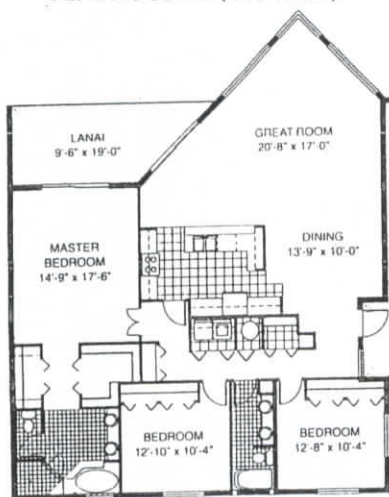
BOAT CLUB OF MARCO  
870 Collier Court



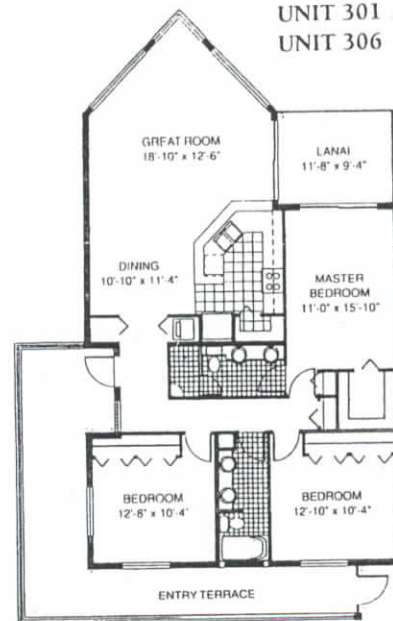
UNIT 202  
UNIT 203  
UNIT 204  
UNIT 205



PENTHOUSE 1  
PENTHOUSE 4 (REVERSE)



UNIT 301  
UNIT 306

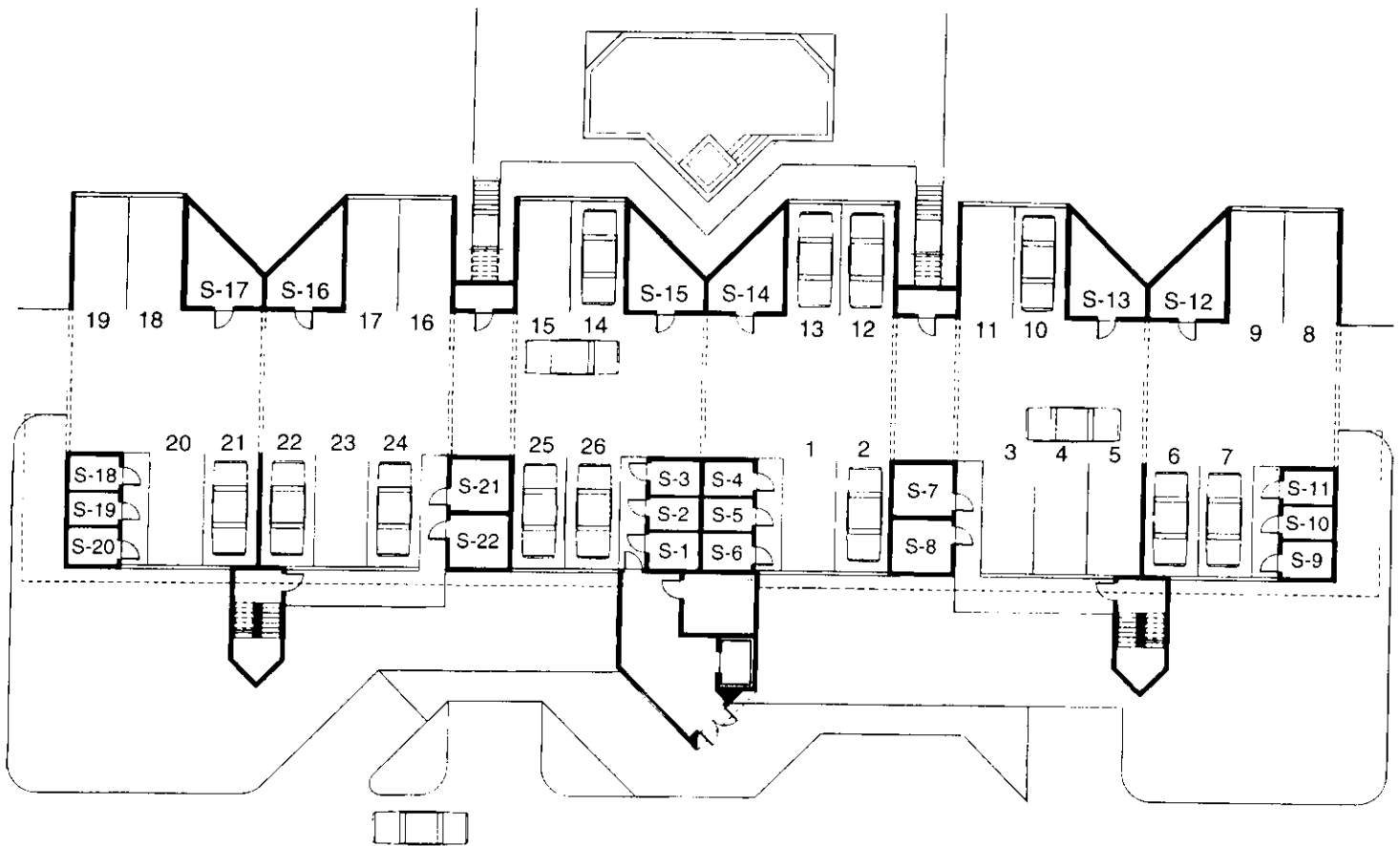


Unit No.	Sq.Ft.	Bed/Bath	Amenities
01-06	1442 A/C	3 / 2	Domed ceiling in kitchen
Penthouses	1940 A/C	3/ 2	Screened in lanai
Rental Res: 30-day minimum			Corner units have private entry terrace
Pets: with approval			Washer/dryer in unit
			Penthouses have cathedral ceilings

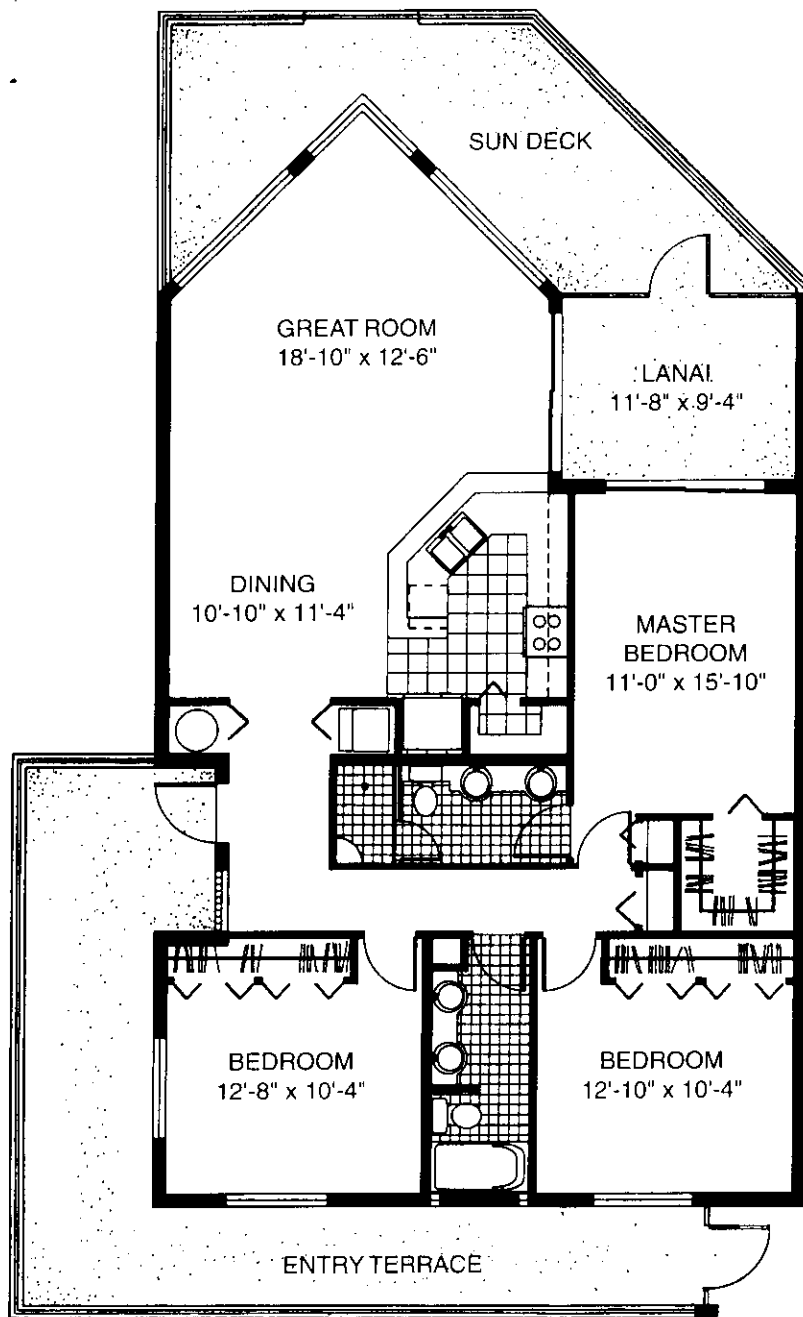
Building Amenities

Built: 1995  
Stories: 4  
Units: 22

1 Covered parking (penth = 2 cov pkg)  
Heated pool  
Includes 25-ft. boat dock  
Elevator



**GARAGE FLOORPLAN**

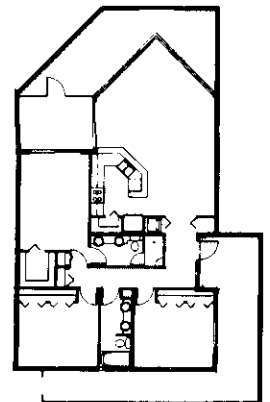
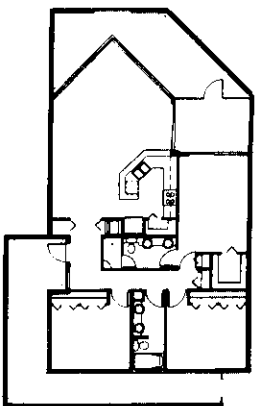


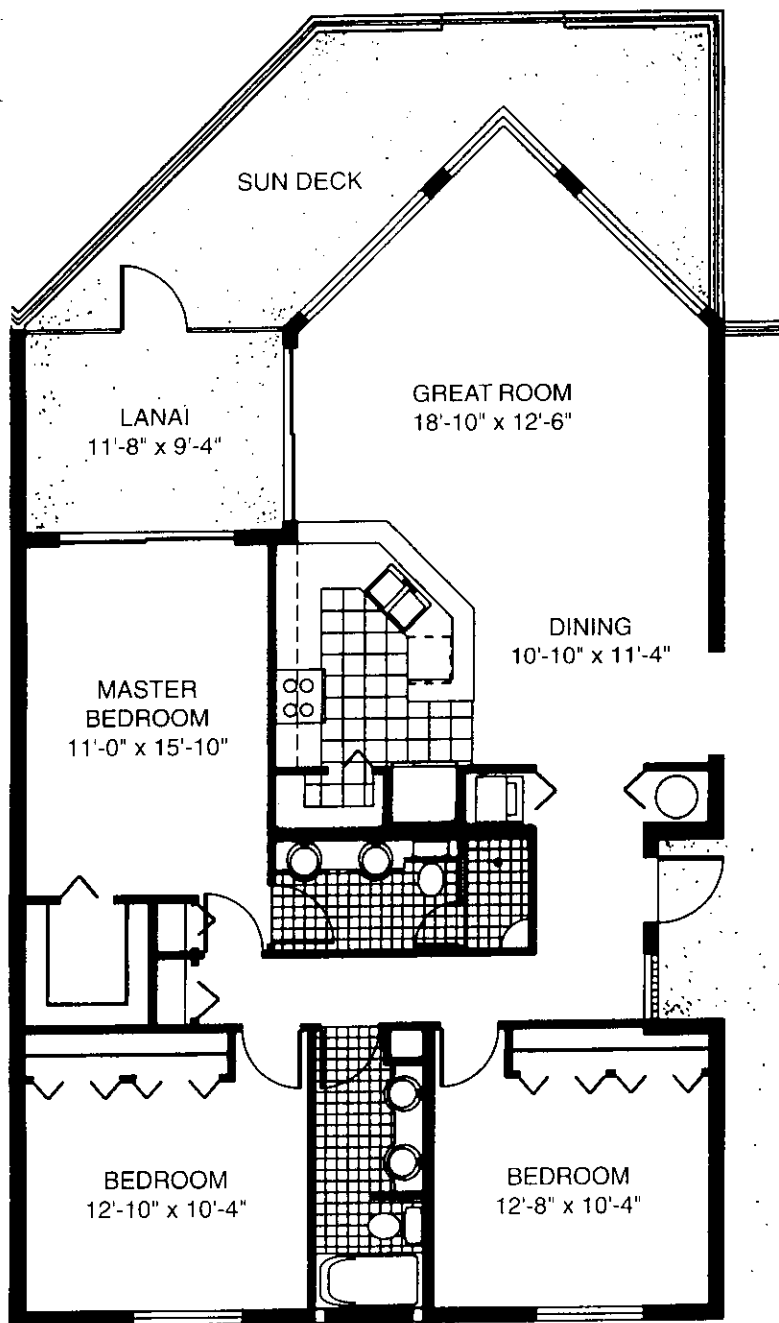
All dimensions are approximate.



## UNIT 201 UNIT 206 (REVERSE)

Air Conditioned Area.....	1,442 S.F.
Sun Deck.....	270 S.F.
Lanai .....	113 S.F.
Entry Terrace .....	381 S.F.
Total Area.....	2,206 S.F.

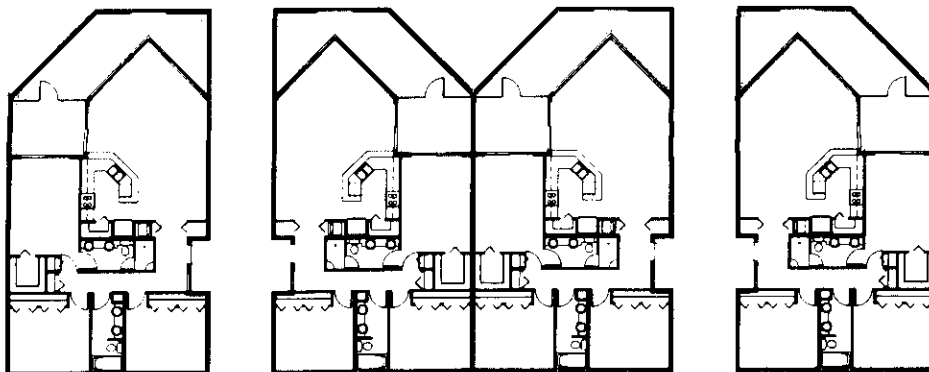


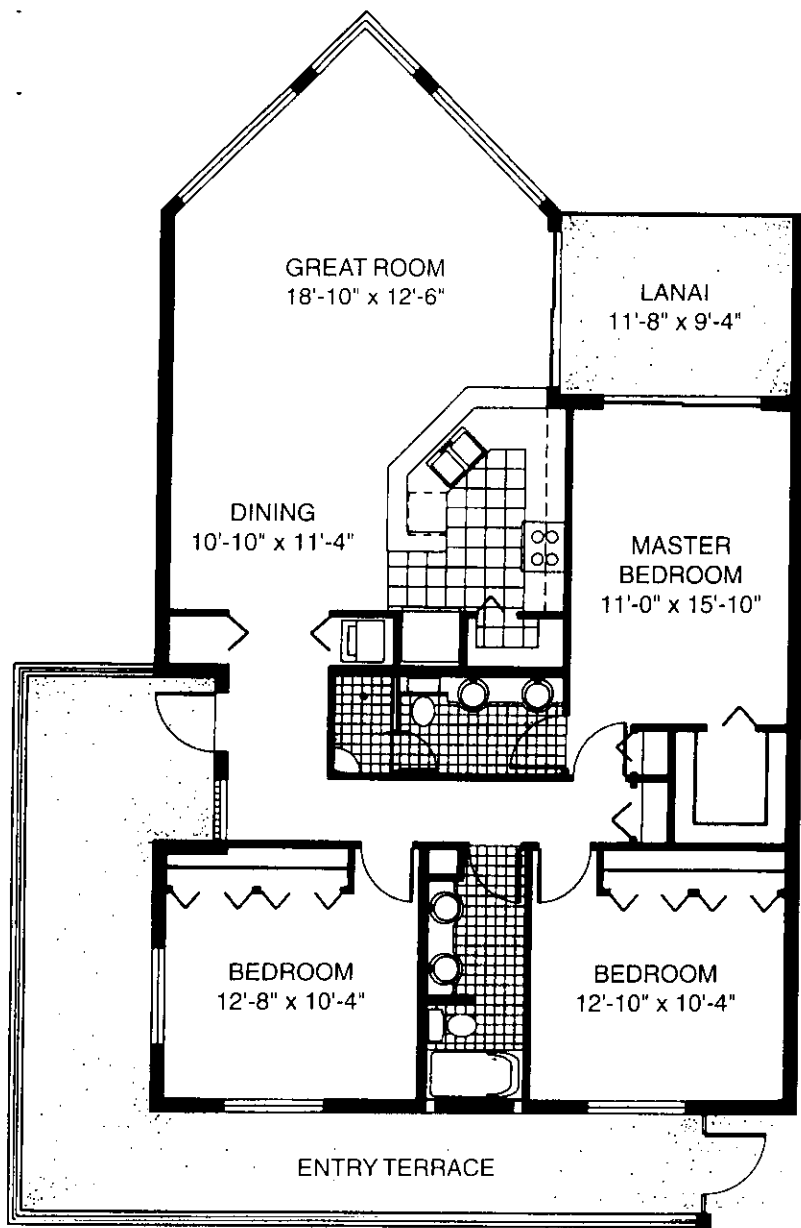


**UNIT 202**  
**UNIT 203 (REVERSE)**  
**UNIT 204**  
**UNIT 205 (REVERSE)**

Air Conditioned Area ..... 1,442 S.F.  
 Sun Deck ..... 270 S.F.  
 Lanai ..... 113 S.F.  
 Total Area ..... 1,825 S.F.

All dimensions are approximate.



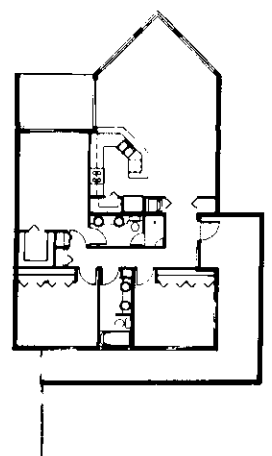
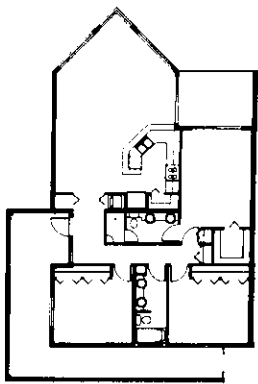


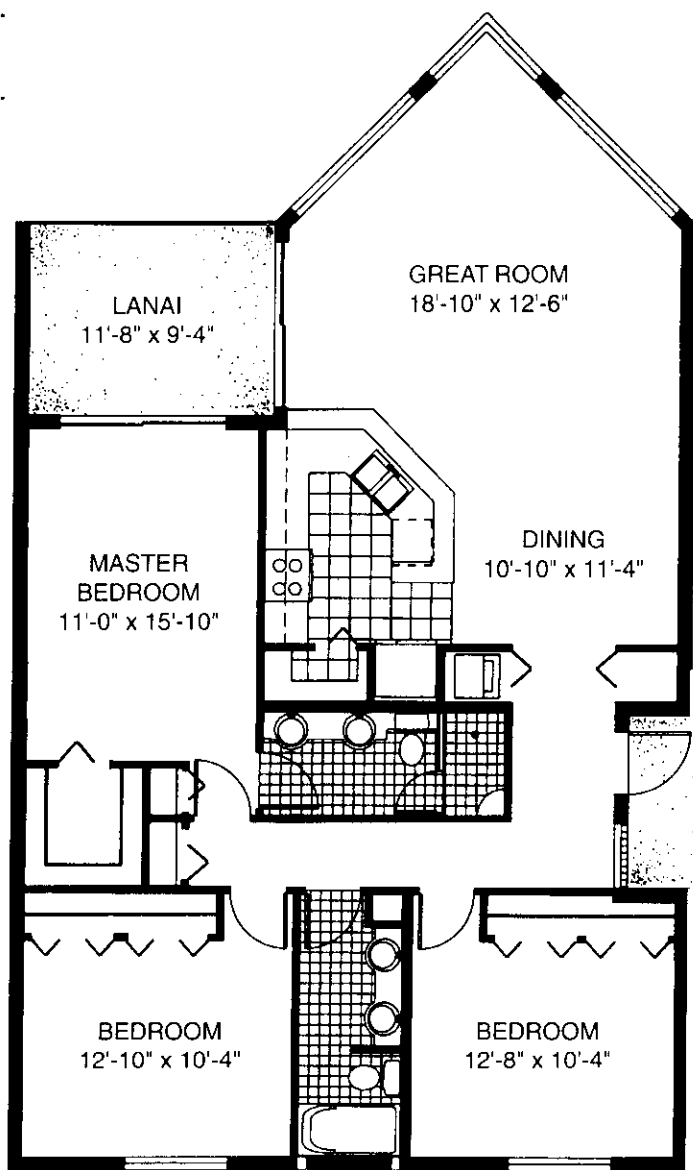
All dimensions are approximate.



## UNIT 301 UNIT 306 (REVERSE)

Air Conditioned Area..... 1,442 S.F.  
 Lanai ..... 113 S.F.  
 Entry Terrace ..... 381 S.F.  
 Total Area..... 1,936 S.F.



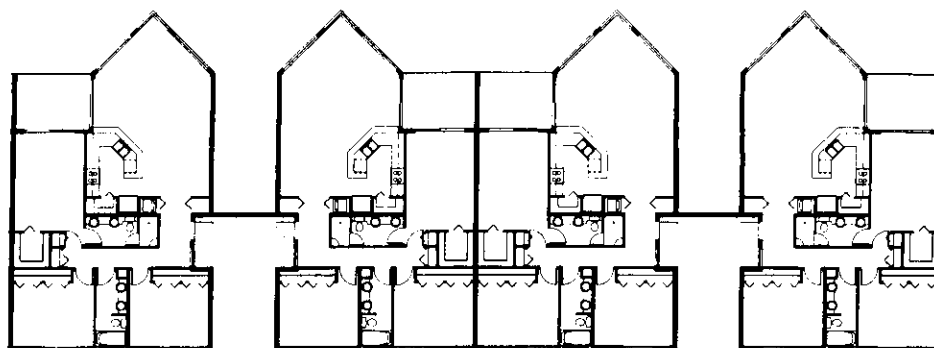


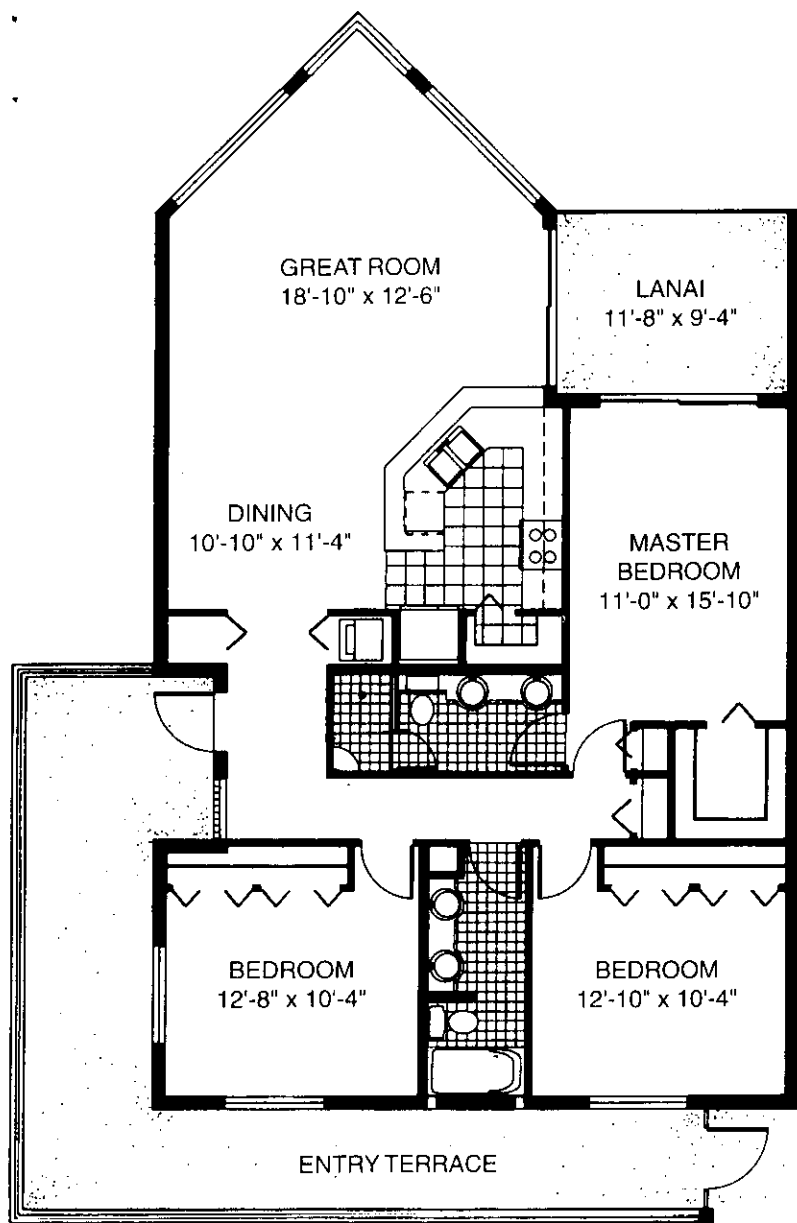
All dimensions are approximate.



**UNIT 302**  
**UNIT 303 (REVERSE)**  
**UNIT 304**  
**UNIT 305 (REVERSE)**  
**UNIT 402**  
**UNIT 403 (REVERSE)**  
**UNIT 404**  
**UNIT 405 (REVERSE)**

Air Conditioned Area..... 1,442 S.F.  
 Lanai ..... 113 S.F.  
 Total Area..... 1,555 S.F.





All dimensions are approximate.

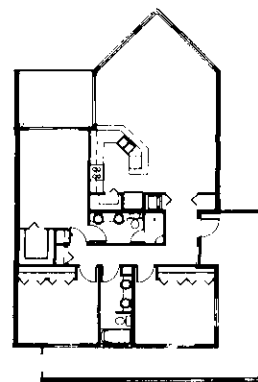
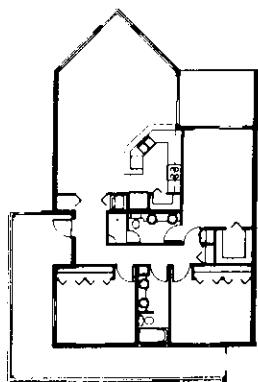


## UNIT 401 UNIT 406 (REVERSE)

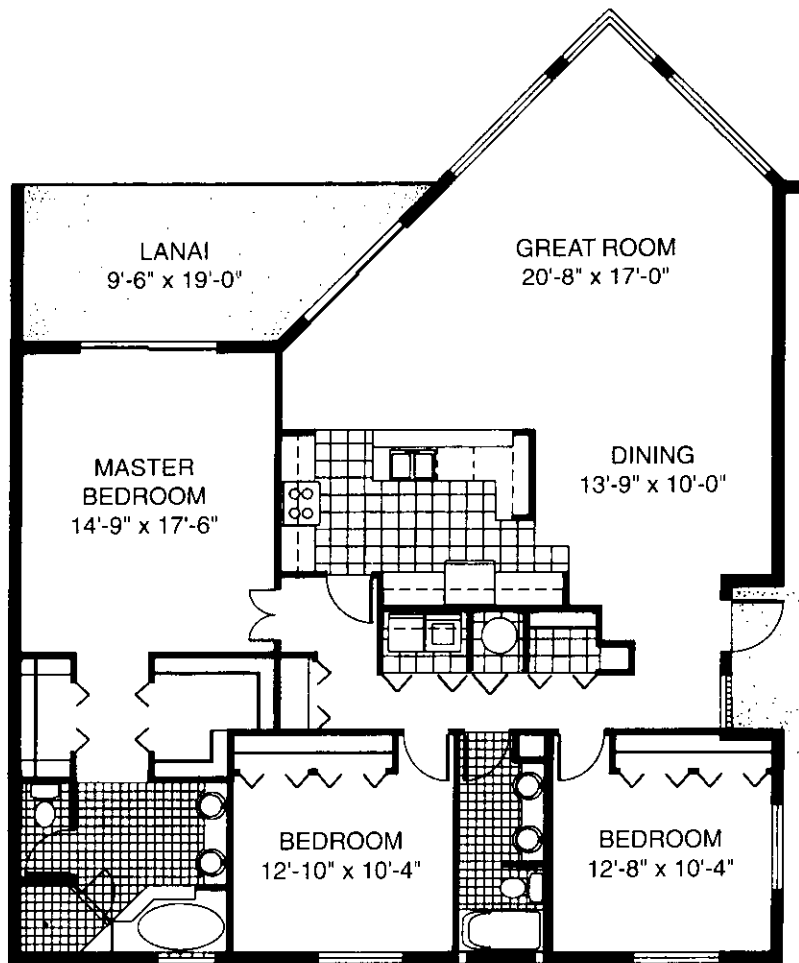
Additional features:

- Cathedral ceilings
- Clerestory window feature in Great Room
- Oversized storage locker

Air Conditioned Area ..... 1,442 S.F.  
 Lanai ..... 113 S.F.  
 Entry Terrace ..... 381 S.F.  
 Total Area ..... 1,936 S.F.







All dimensions are approximate.

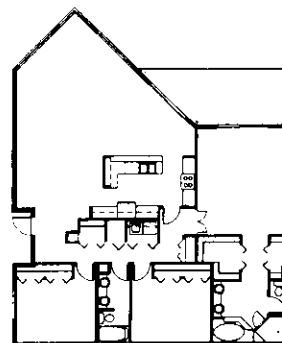
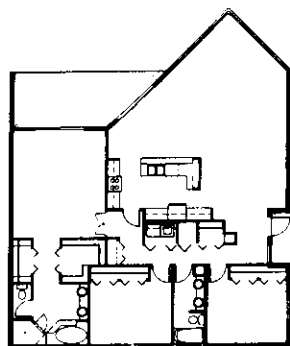


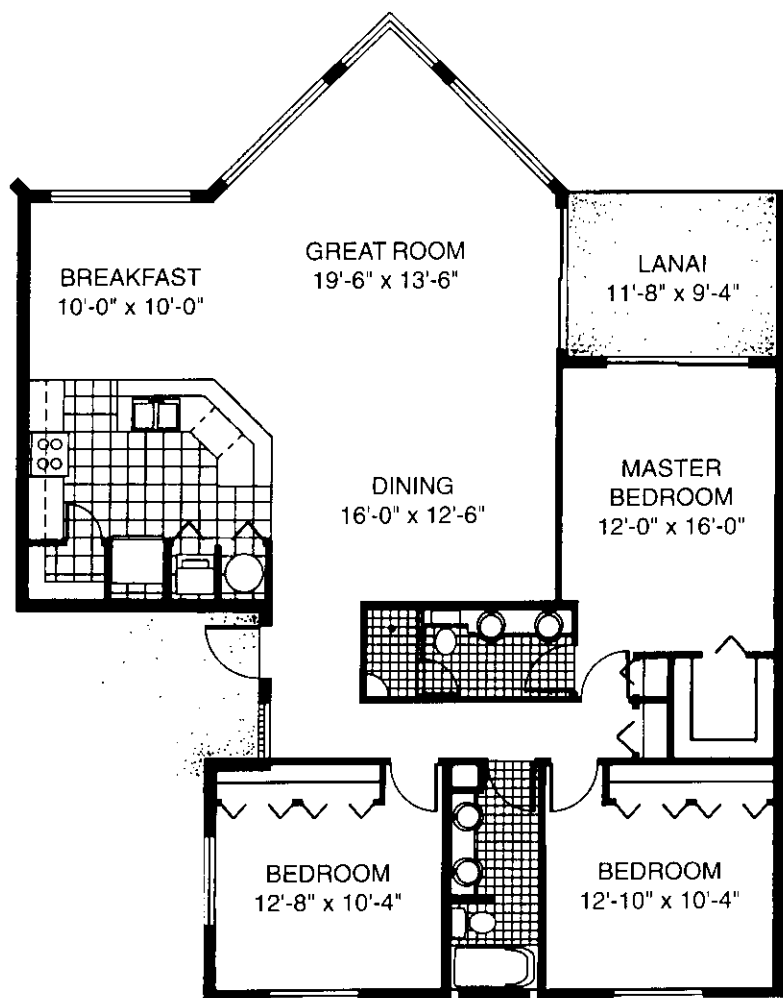
## PENTHOUSE 1 PENTHOUSE 4 (REVERSE)

Additional features:

- Cathedral ceilings
- Clerestory window feature in Great Room
- Oversized storage locker
- Two covered parking spaces

Air Conditioned Area..... 1,940 S.F.  
Lanai ..... 188 S.F.  
Total Area..... 2,128 S.F.





## PENTHOUSE 2 PENTHOUSE 3 (REVERSE)

Additional features:

- Cathedral ceilings
- Clerestory window feature in Great Room
- Oversized storage locker
- Two covered parking spaces

All dimensions are approximate.

Air Conditioned Area..... 1,686 S.F.  
Lanai ..... 113 S.F.  
Total Area..... 1,799 S.F.

