



Artist's rendering not necessarily to scale and may be subject to change without notice.

Club Marco is a gated community of spacious Coach Homes overlooking an expansive three acre lake with a graceful lighted fountain.

Club Marco's ideal location is within walking distance to Marco Island's spectacular crescent beach, shopping, dining and entertainment.

On site amenities include a beautiful appointed clubhouse, heated pool, spa and tennis court.

Club Marco's elegant residences, the Antigua and the Bermuda, have a private

courtyard entrance and offer up to 1,424 square feet of air conditioned living space. Including the private garage, screened entry and lanai, the total area is a generous 1,878 or 1,904 square feet.

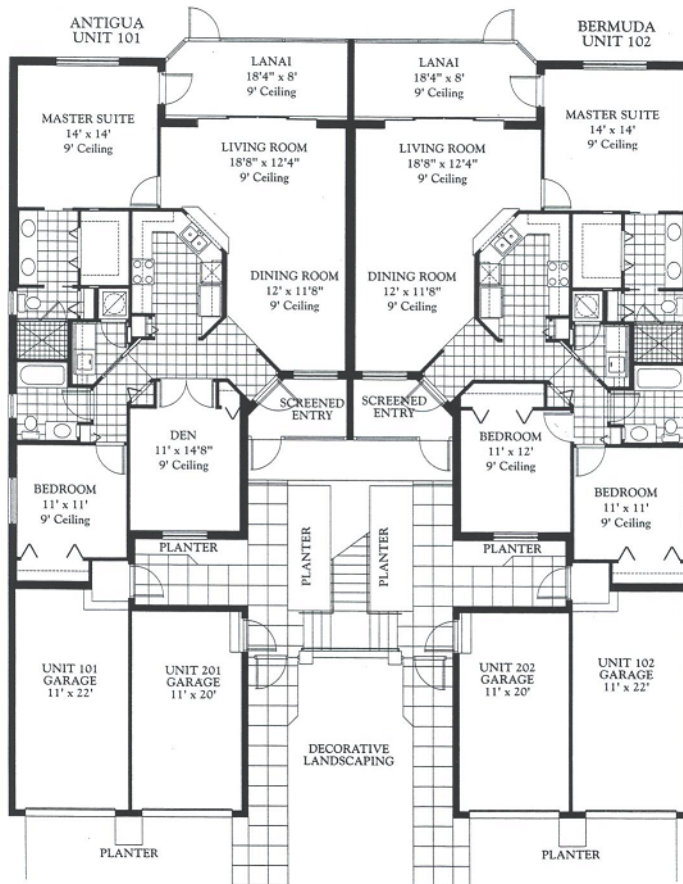
The Antigua features two bedrooms, two full baths and a den; The Bermuda is a traditional three bedroom split plan with two full baths. The first floor homes offer 9 foot ceiling heights and the second floor homes have a combination of 9 foot and vaulted ceilings.

Whichever your choice...you've made the right decision...Club Marco on Marco Island is Florida living at its best.

ORAL REPRESENTATIONS CANNOT BE RELIED UPON AS CORRECTLY STATING REPRESENTATIONS OF THE DEVELOPER. FOR CORRECT REPRESENTATIONS, MAKE REFERENCES TO THIS BROCHURE AND TO THE DOCUMENTS REQUIRED BY SECTION 718.503, FLORIDA STATUTES, TO BE FURNISHED BY THE DEVELOPER TO BUYER OR LESSEE. THE DEVELOPER MAINTAINS A CONTINUOUS DESIGN PROGRAM AND RESERVES THE RIGHT TO MODIFY FLOOR PLANS AND MATERIALS USED IN CONSTRUCTION WITHOUT NOTICE.



FIRST FLOOR

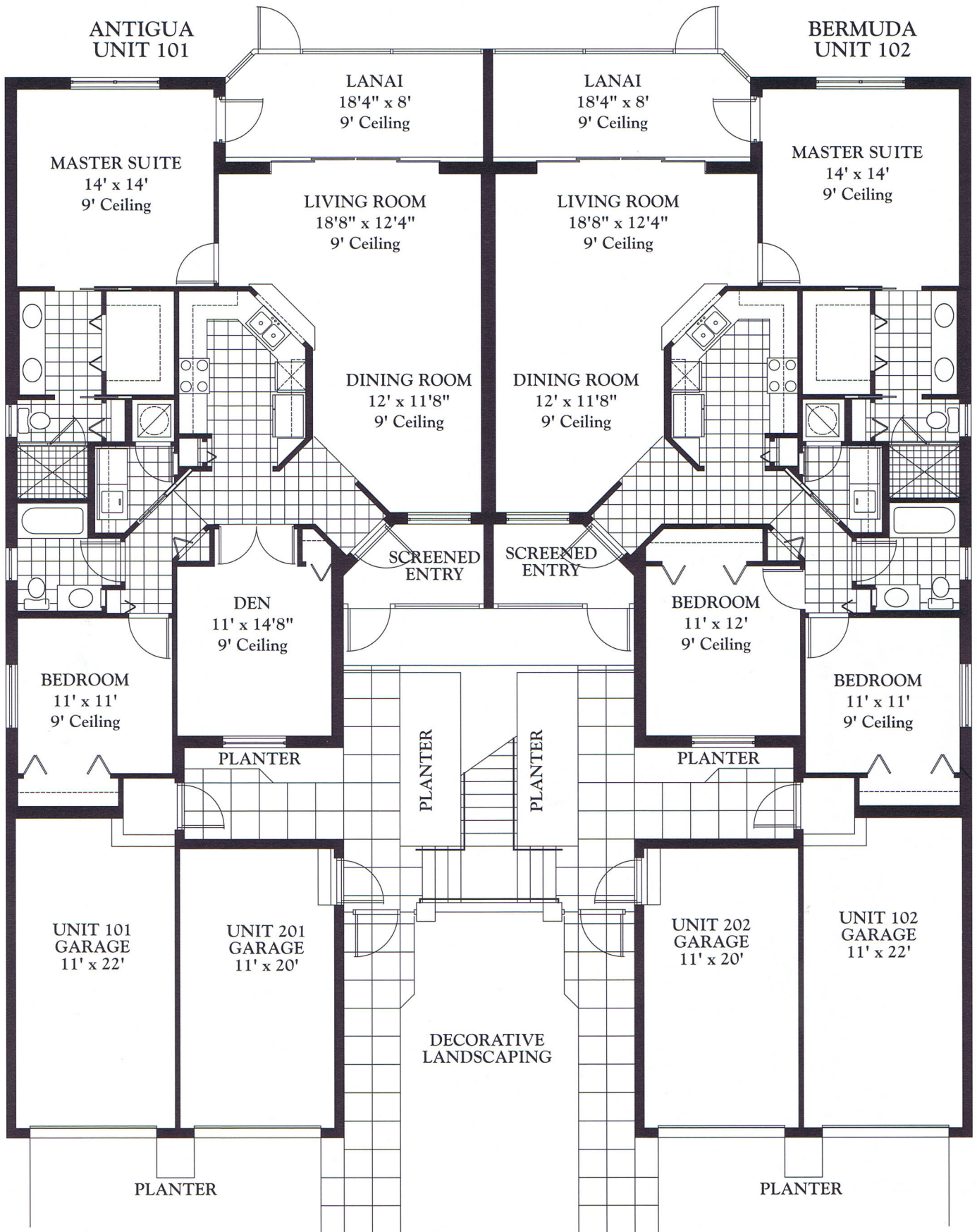




A/C LIVING AREA	1,412 SQ.FT.
LANAI	149 SQ.FT.
ENTRY	55 SQ.FT.
GARAGE	288 SQ.FT.
TOTAL AREA	1,904 SQ.FT.

All Dimensions Are Approximate And Subject To Change Without Notice.

FIRST FLOOR





SECOND FLOOR

A/C LIVING AREA	1,424 SQ.FT.
LANAI	149 SQ.FT.
ENTRY	55 SQ.FT.
GARAGE	250 SQ.FT.
TOTAL AREA	1,878 SQ.FT.

All Dimensions Are Approximate And Subject To Change Without Notice.

