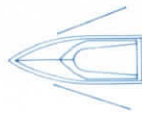
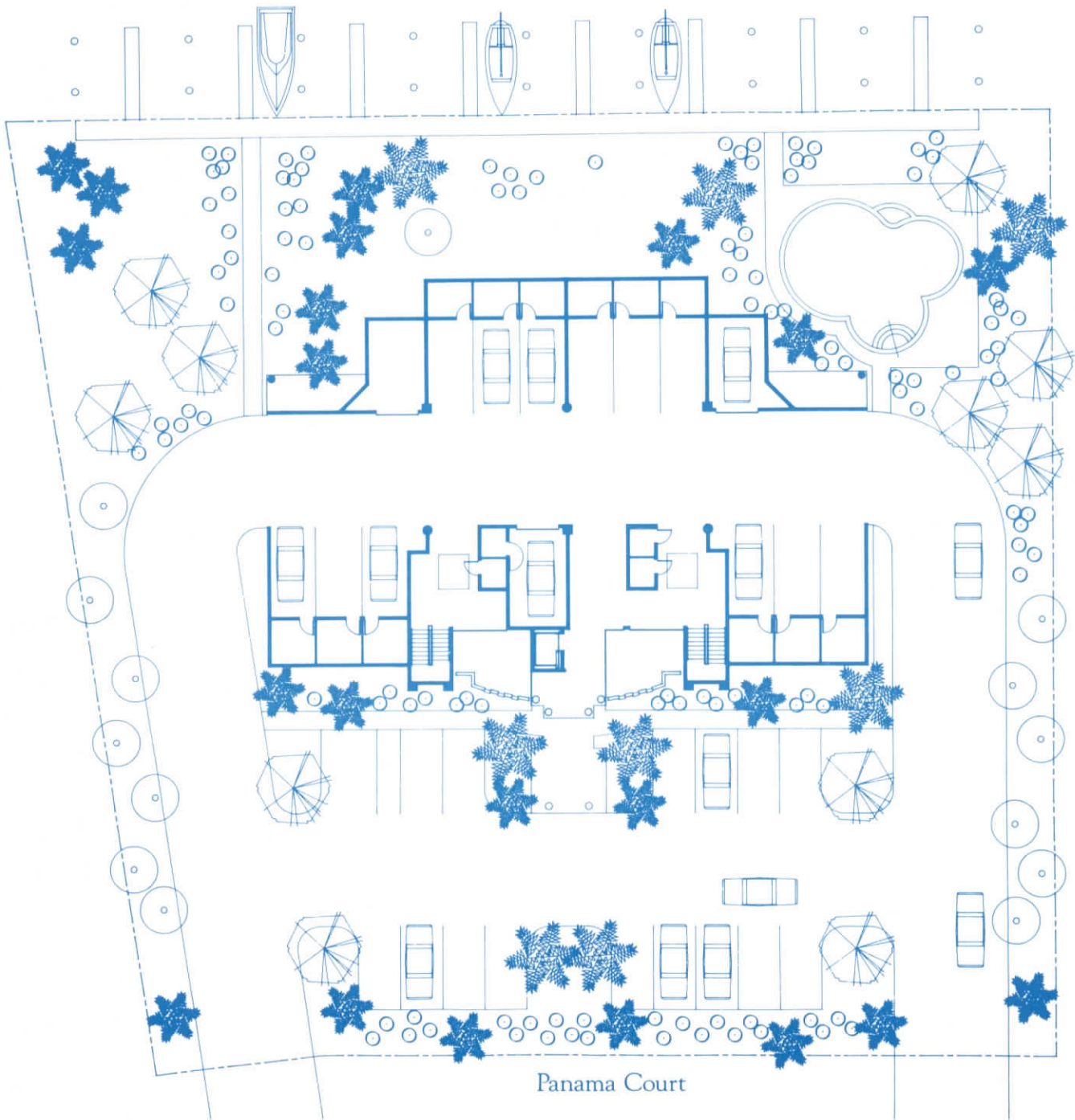


Swallow Waterway

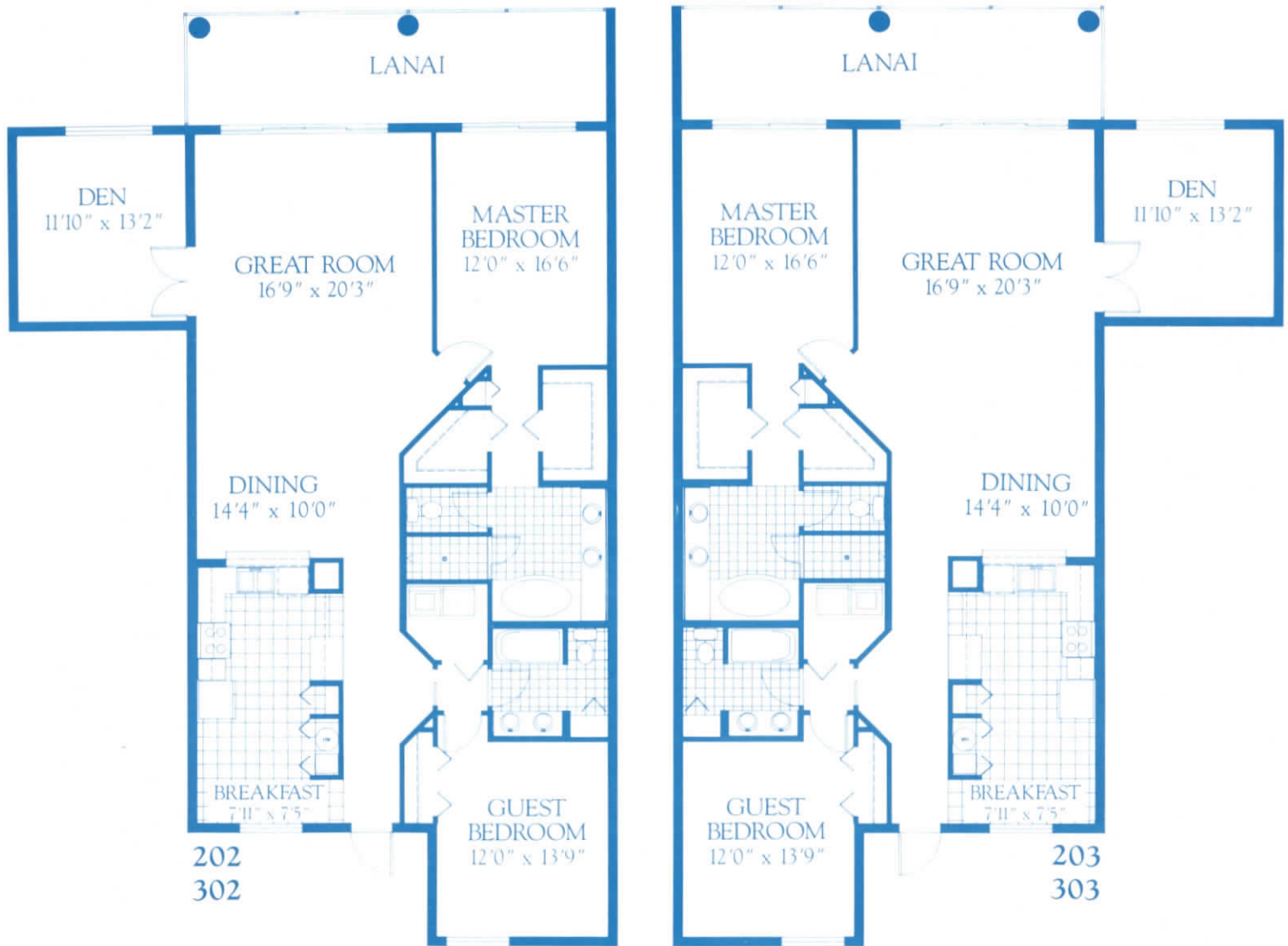


THE SITE PLAN



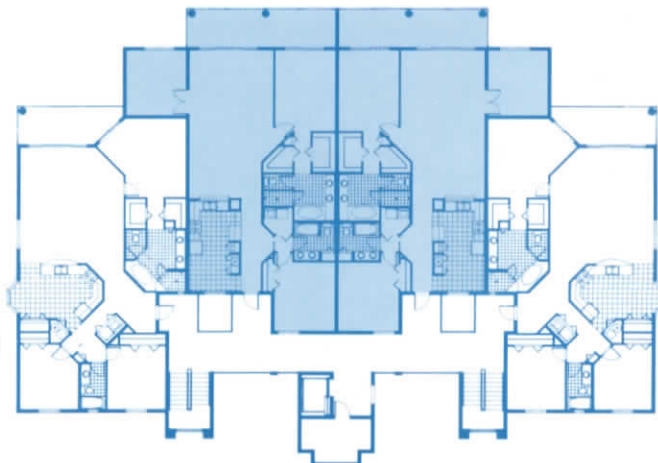
Situated along picturesque Swallow Waterway the Maxime Club of Marco Island is your gateway to the Gulf of Mexico. With direct boat access you will be boating in the aquamarine waters of the Gulf in just minutes. The Maxime Club is a private, intimate community of just 15 residences and features the serenity of Island-style living at its best. Indulge in the beauty of this wonderful tropical setting of lush landscaping, native birds and cool island breezes. Each residence is appointed with luxury features to make your home as comfortable as any home can be. Delight in the expanse of the rooms and enjoy the pleasures of indoor/outdoor living these magnificently designed residences afford.

SITE PLAN IS CONCEPTUAL AND SUBJECT TO CHANGE.



THE DOLPHIN

Air Conditioned Area . . . 1810 S.F. • Lanai . . . 238 S.F.
 Total Area . . . 2,048 S.F.



ALL DIMENSIONS ARE APPROXIMATE.

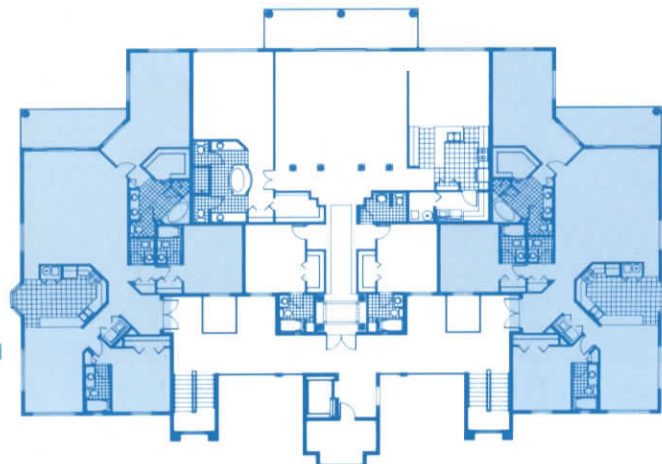


501

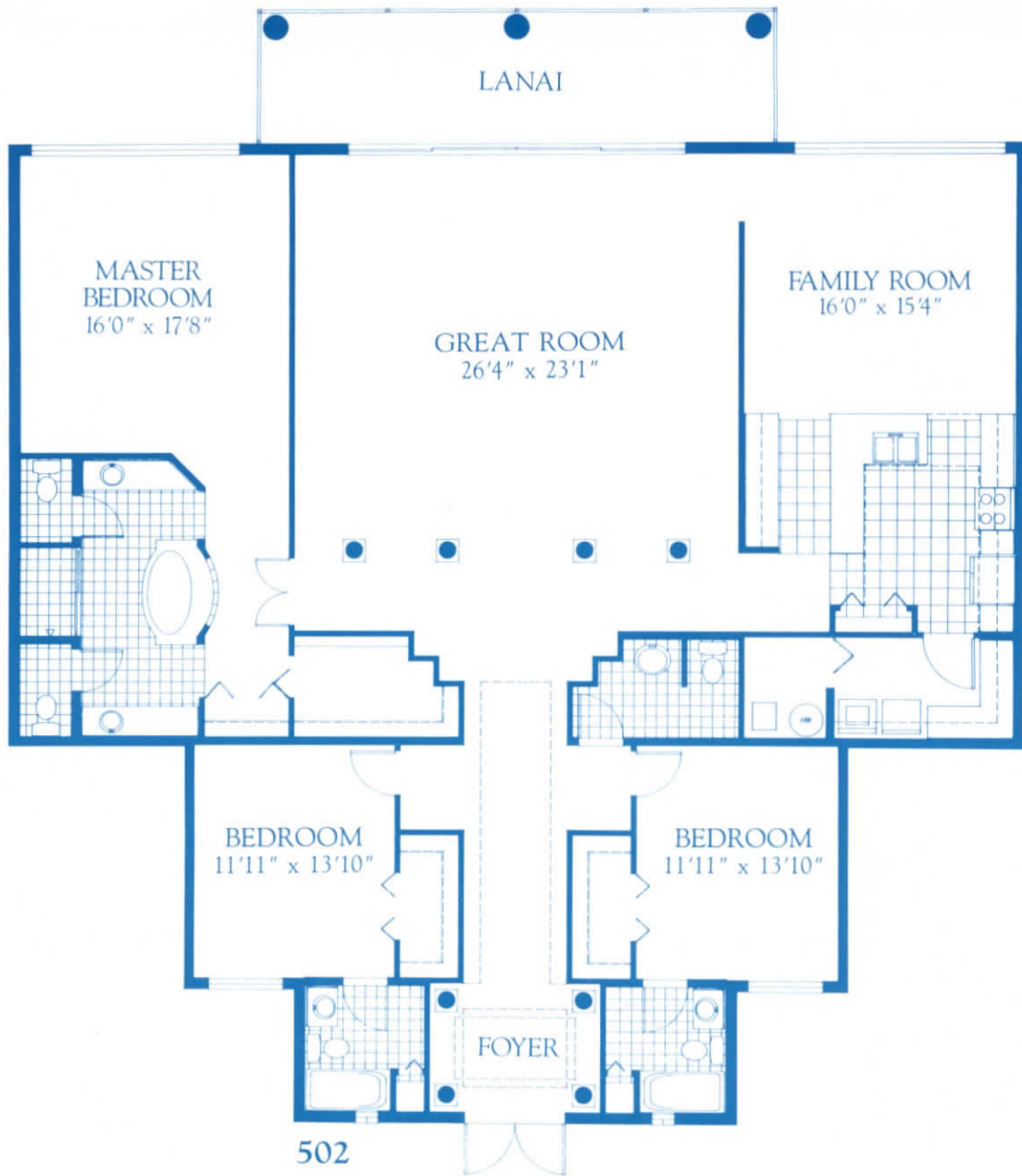
503

THE MARLIN

Air Conditioned Area . . . 2216 S.F. • Lanai . . . 154 S.F.
 Total Area . . . 2,370

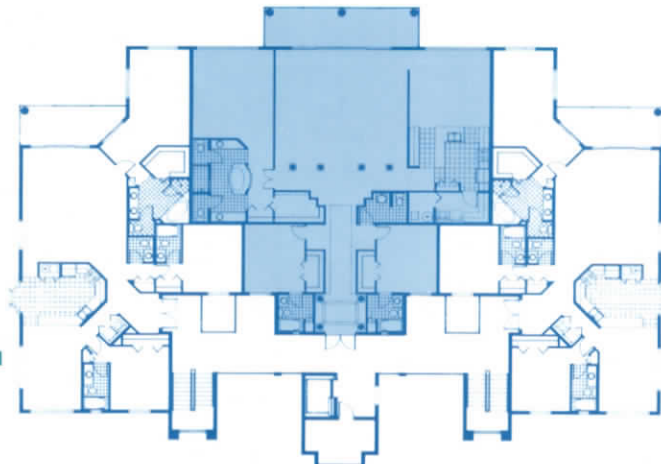


ALL DIMENSIONS ARE APPROXIMATE.



THE PERCH

Air Conditioned Area . . . 2,938 S.F. • Lanai . . . 248 S.F.
 Total Area . . . 3,186 S.F.

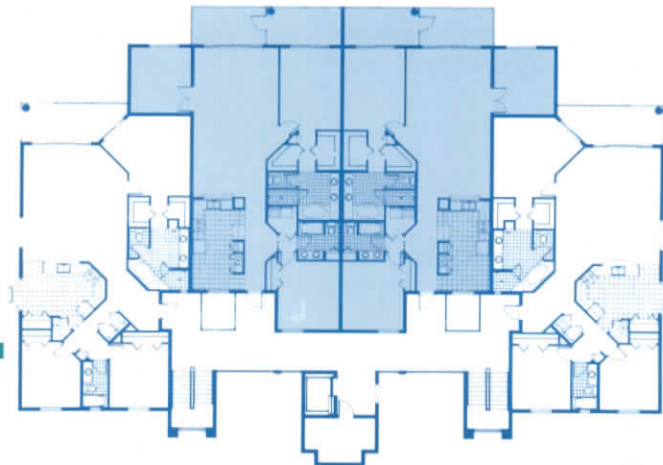


ALL DIMENSIONS ARE APPROXIMATE.

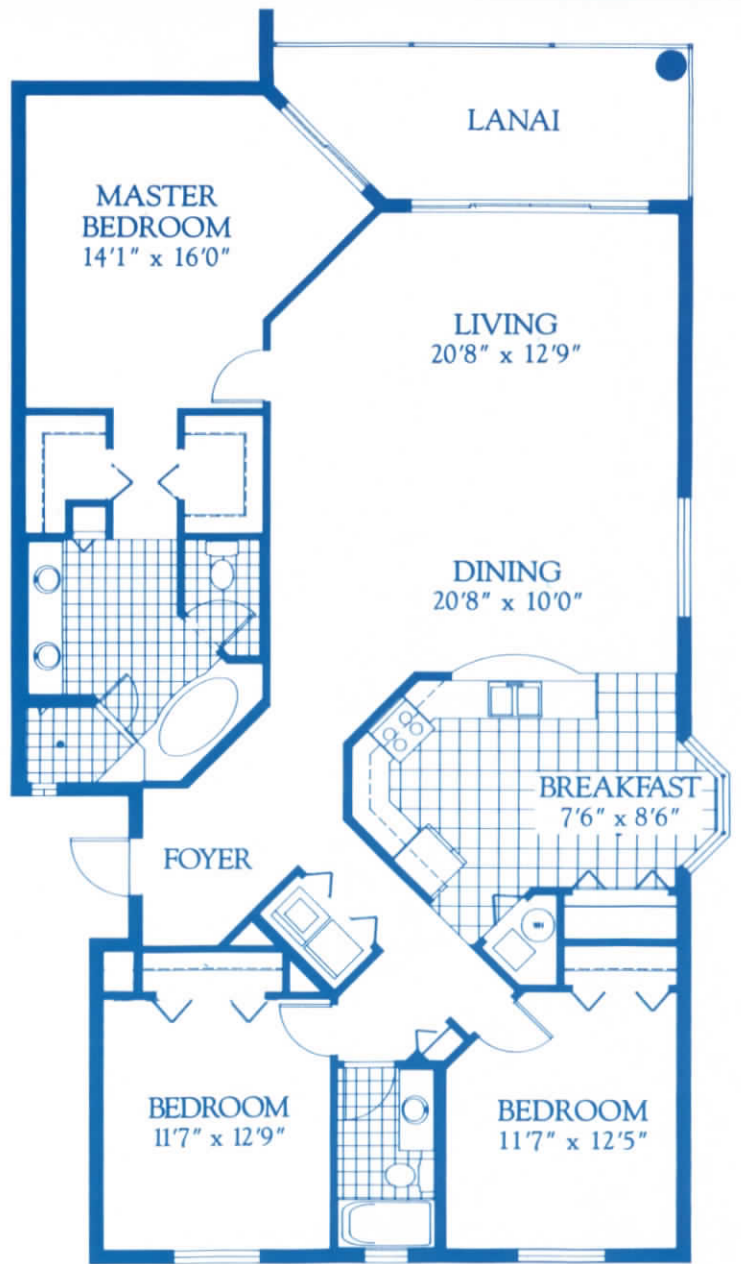
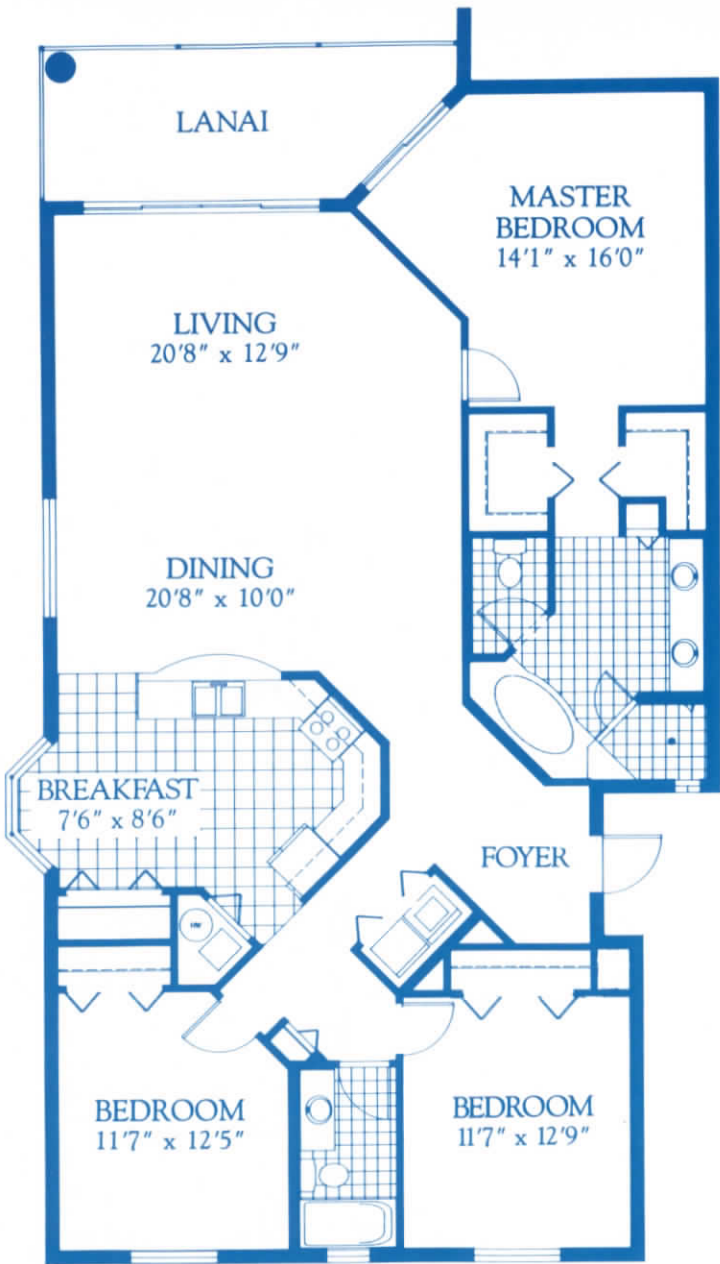


THE POMPANO

Air Conditioned Area . . . 1810 S.F. • Sun Deck . . . 119 S.F. • Lanai . . . 118 S.F.
 Total Area . . . 2,047 S.F.



ALL DIMENSIONS ARE APPROXIMATE.

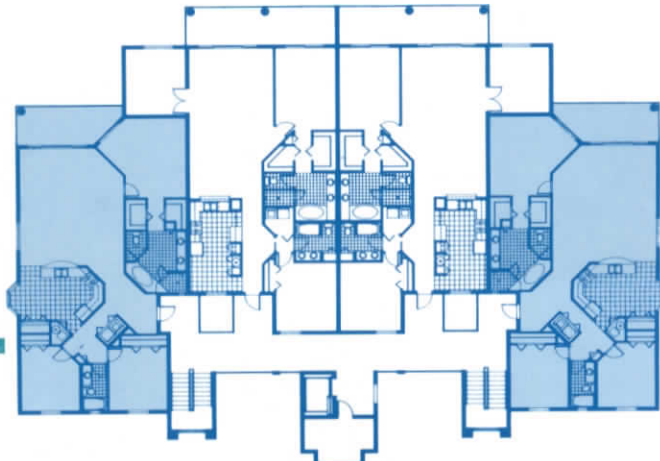


201
301
401

204
304
404

THE TARPON

Air Conditioned Area . . . 1873 S.F. • Lanai . . . 154 S.F.
Total Area . . . 2,027 S.F.



ALL DIMENSIONS ARE APPROXIMATE.