



SITE PLAN

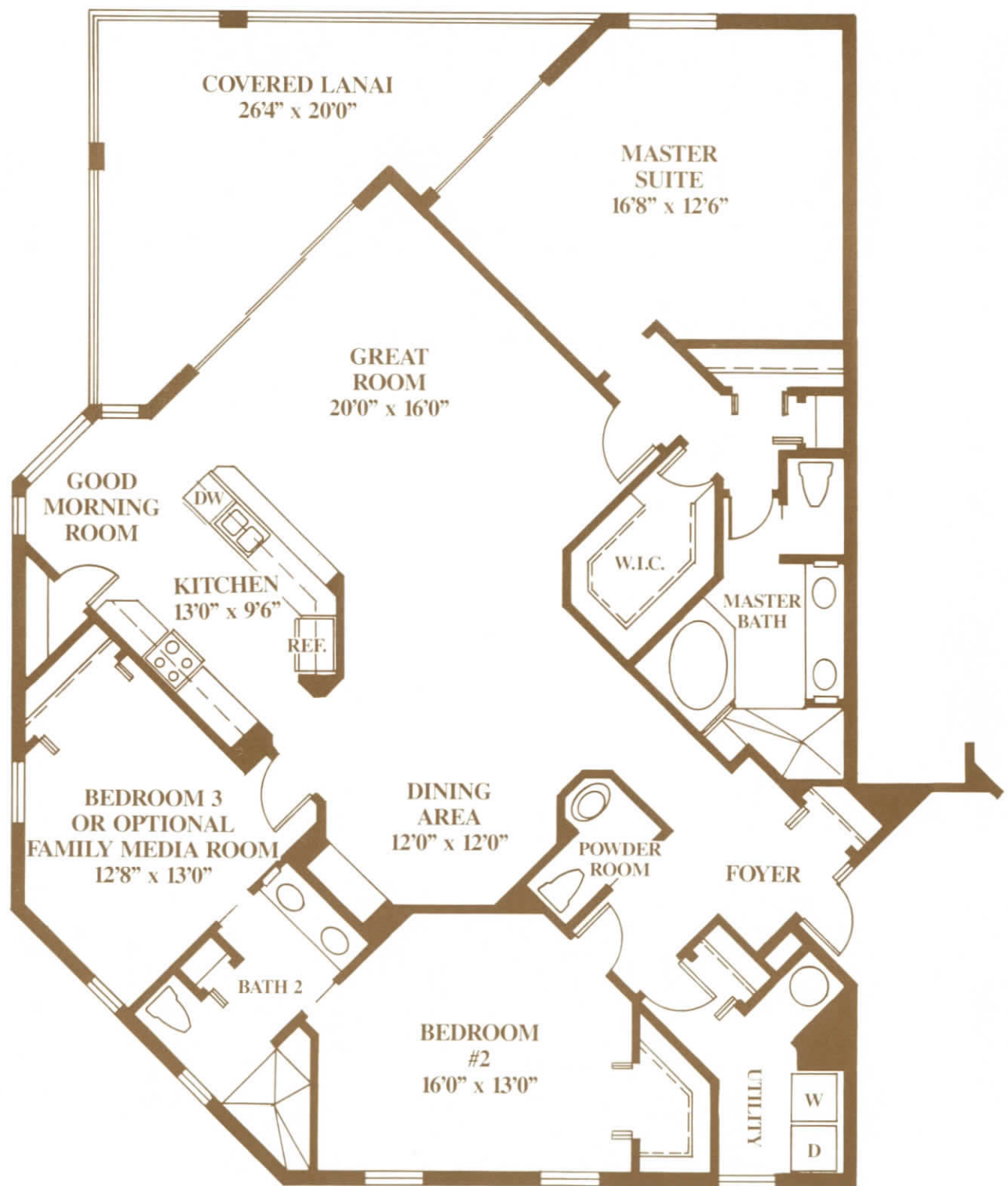
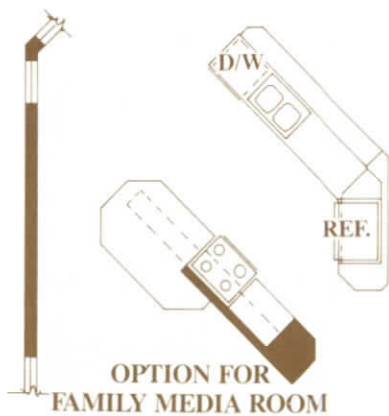


ARTIST RENDERING



Vintage Retreat "A"

| | |
|--------------|-----------------|
| LIVING AREA | 2,103 SF |
| LANAI | 284 SF |
| TOTAL | 2,387 SF |



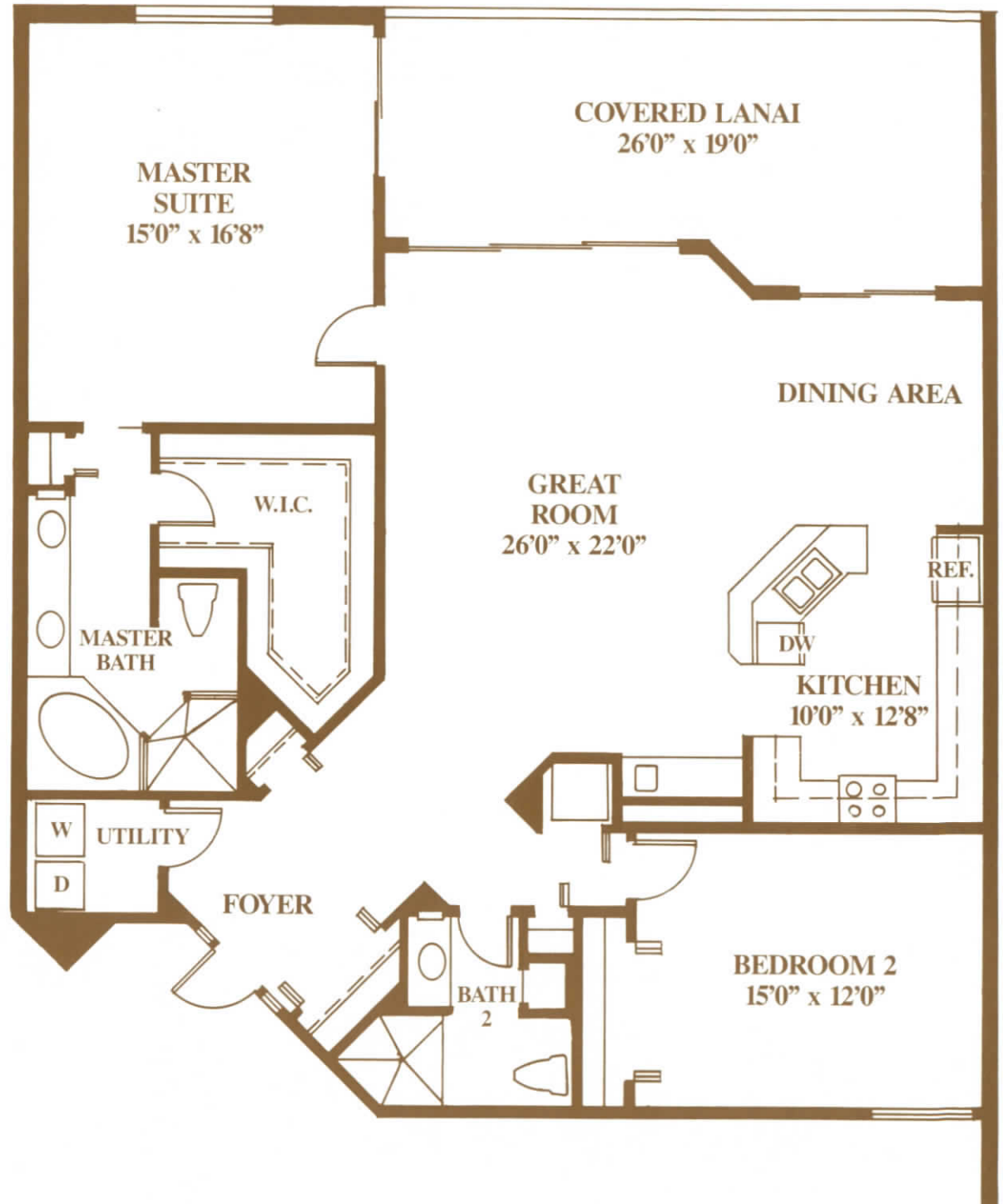
All plans, dimensions and information are approximate and are subject to change without notice. Developer reserves the right to modify site plan, amenities and future product.



Vintage Retreat "B"

| | |
|--|----------|
| LIVING AREA | 1,637 SF |
| LANAI | 285 SF |
| <i>(ON 1ST FLR UNITS ONLY, 425 SF)</i> | |
| TOTAL | 1,922 SF |
| <i>(ON 1ST FLR UNITS ONLY, 2,063 SF)</i> | |

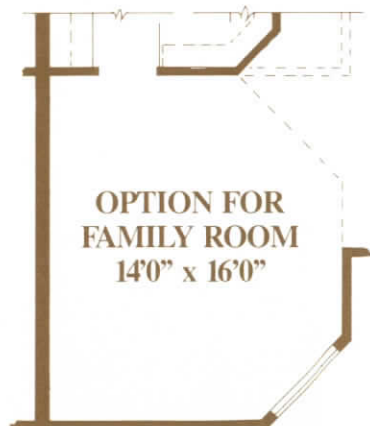
All plans, dimensions and information are approximate and are subject to change without notice. Developer reserves the right to modify site plan, amenities and future product.



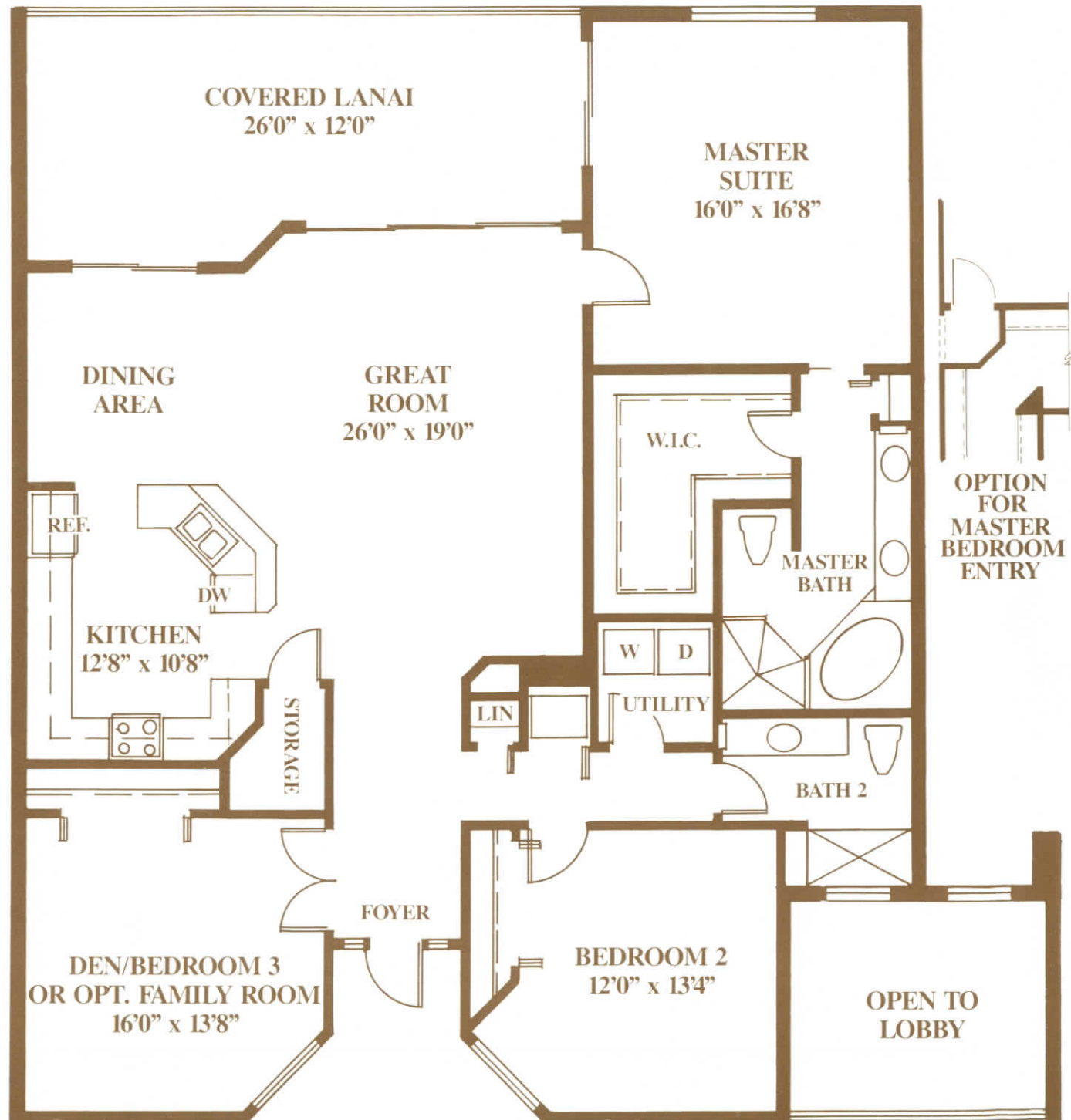


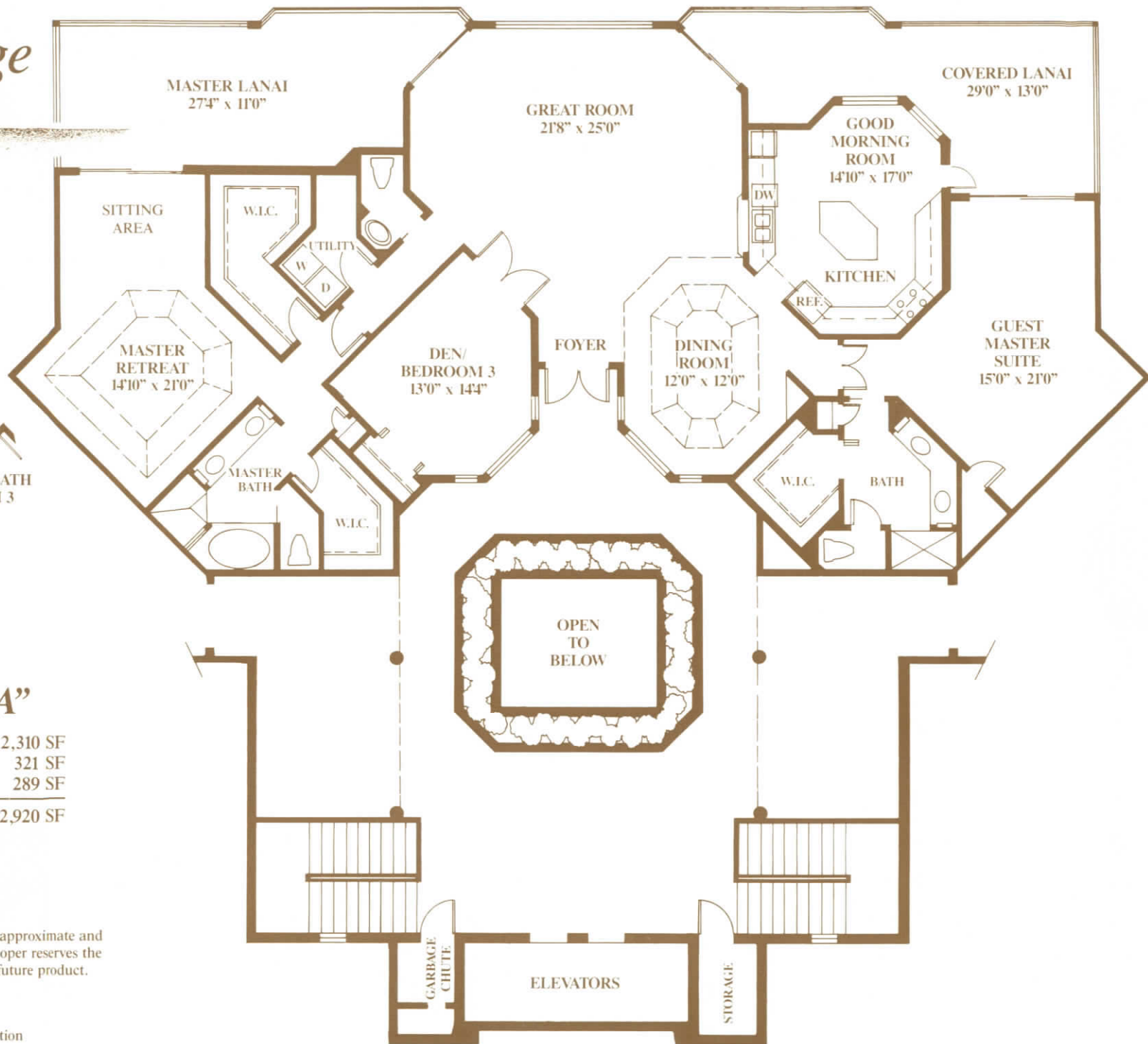
Vintage Retreat "C"

| | |
|--|-----------------|
| LIVING AREA | 1,773 SF |
| LANAI | 285 SF |
| <i>(ON 1ST FLR UNITS ONLY, 425 SF)</i> | |
| TOTAL | 2,058 SF |
| <i>(ON 1ST FLR UNITS ONLY, 2,198 SF)</i> | |



All plans, dimensions and information are approximate and are subject to change without notice. Developer reserves the right to modify site plan, amenities and future product.





Vintage Penthouse "A"

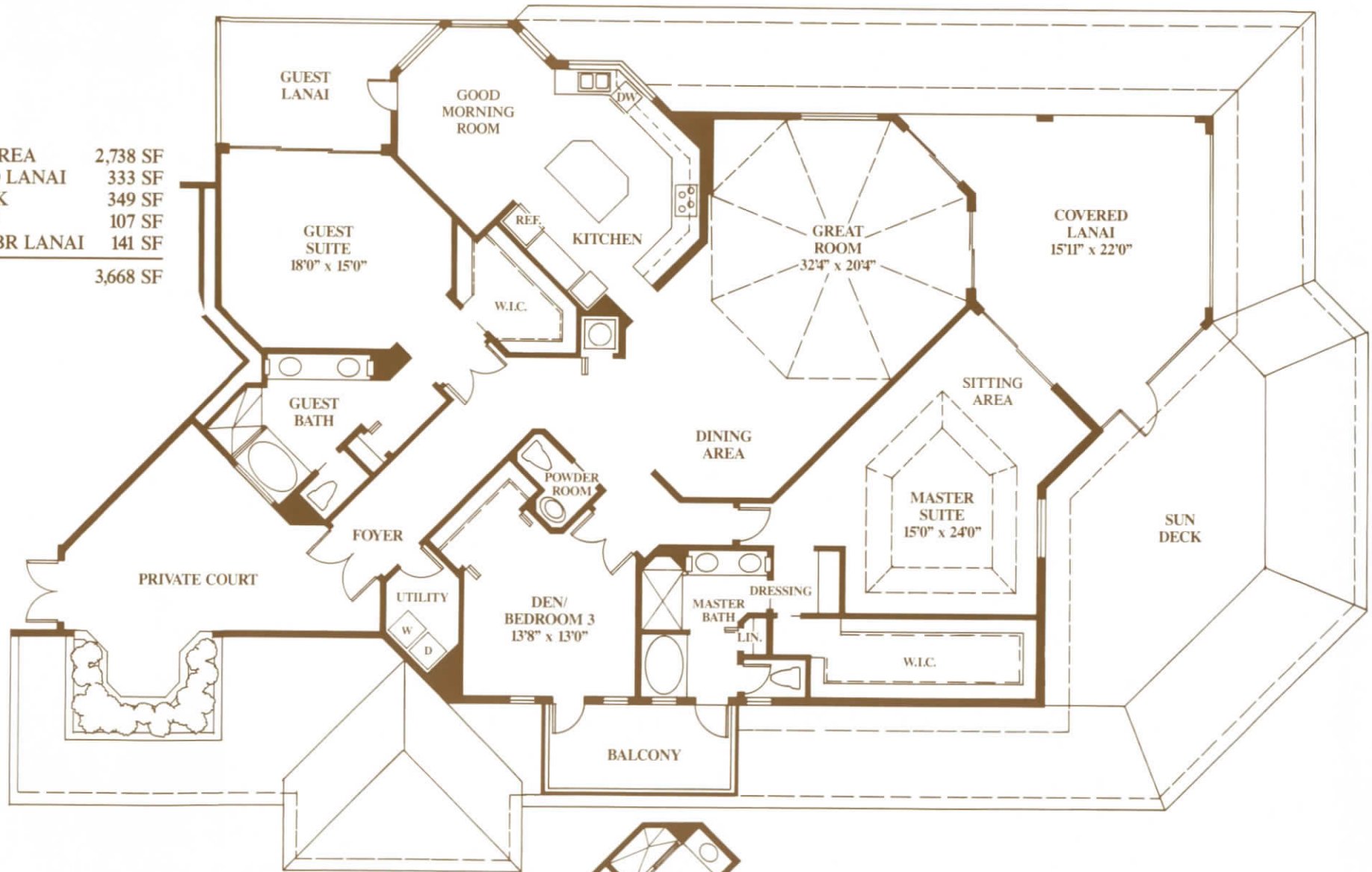
| | |
|------------------|-----------------|
| LIVING AREA | 2,310 SF |
| MASTER BR. LANAI | 321 SF |
| GUEST BR. LANAI | 289 SF |
| TOTAL | 2,920 SF |

All plans, dimensions and information are approximate and are subject to change without notice. Developer reserves the right to modify site plan, amenities and future product.



Vintage Penthouse "B"

| | |
|-----------------|-----------------|
| LIVING AREA | 2,738 SF |
| COVERED LANAI | 333 SF |
| SUN DECK | 349 SF |
| BALCONY | 107 SF |
| MASTER BR LANAI | 141 SF |
| TOTAL | 3,668 SF |



All plans, dimensions and information are approximate and are subject to change without notice. Developer reserves the right to modify site plan, amenities and future product.